



## Original Research

# Patient-reported outcomes from FLAURA: Osimertinib versus erlotinib or gefitinib in patients with EGFR-mutated advanced non-small-cell lung cancer



Natasha B. Leighl<sup>a</sup>, Nina Karaseva<sup>b</sup>, Kazuhiko Nakagawa<sup>c</sup>,  
Byoung-Chul Cho<sup>d</sup>, Jhanelle E. Gray<sup>e</sup>, Tina Hovey<sup>f</sup>, Andrew Walding<sup>g</sup>,  
Anna Rydén<sup>h</sup>, Silvia Novello<sup>i,\*</sup>

<sup>a</sup> Princess Margaret Cancer Centre, Toronto, ON, Canada

<sup>b</sup> City Clinical Oncology Dispensary, St. Petersburg, Russia

<sup>c</sup> Department of Medical Oncology, Kindai University Faculty of Medicine, Osakasayama, Japan

<sup>d</sup> Division of Medical Oncology, Yonsei Cancer Center, Yonsei University College of Medicine, Seoul, Republic of Korea

<sup>e</sup> Department of Thoracic Oncology, H. Lee Moffitt Cancer Center and Research Institute, Tampa, FL, USA

<sup>f</sup> PHASTAR, London, UK

<sup>g</sup> AstraZeneca R&D, Cambridge, UK

<sup>h</sup> AstraZeneca Gothenburg, Mölndal, Sweden

<sup>i</sup> Department of Oncology, University of Turin, Azienda Ospedaliero-Universitaria San Luigi Gonzaga, Turin, Italy

Received 25 October 2019; accepted 6 November 2019

## KEYWORDS

EORTC QLQ-C30;  
EORTC QLQ-LC13;  
Non-small-cell lung  
cancer;  
Osimertinib;  
Patient-reported  
outcomes

**Abstract Background:** In the FLAURA trial, osimertinib demonstrated superior progression-free survival and a favorable toxicity profile to erlotinib or gefitinib as initial therapy in patients with EGFR-mutated advanced non-small-cell lung cancer. Patient-reported outcomes from FLAURA are discussed here.

**Methods:** Patients (N = 556) completed the EORTC QLQ-LC13 weekly for 6 weeks, then every 3 weeks, and the QLQ-C30 every 6 weeks. Prespecified key symptoms were cough, dyspnea, chest pain, appetite loss, and fatigue. Score changes from baseline to randomized treatment discontinuation were assessed using a mixed-effects model. A  $\geq 10$ -point change was considered clinically relevant. Odds of improvement and time to deterioration were investigated. QLQ-C30 functioning scores were assessed *post hoc*.

**Results:** Questionnaire completion rates were  $>70\%$  at most time points. Baseline mean scores were similar in the osimertinib and erlotinib/gefitinib arms. Scores improved in both arms, but none reached clinical relevance at 5% significance level. A statistically significant difference

\* Corresponding author: Department of Oncology, University of Turin, Azienda Ospedaliero-Universitaria San Luigi Gonzaga, Regione Gonzole, 10, 10043, Orbassano, Turin, Italy.

E-mail address: [silvia.novello@unito.it](mailto:silvia.novello@unito.it) (S. Novello).

favoring osimertinib for chest pain was not clinically relevant ( $-6.84$  vs  $-3.88$ ;  $p = 0.021$ ). Odds of improvement and time to deterioration were similar between treatments. In *post hoc* analyses, improvements favored osimertinib for emotional functioning ( $8.79$  vs  $4.91$ ;  $p = 0.004$ ) and social functioning ( $7.66$  vs  $1.74$ ;  $p < 0.001$ ). Cognitive functioning remained stable with osimertinib but deteriorated with erlotinib/ gefitinib ( $0.03$  vs  $-3.91$ ;  $p = 0.005$ ).

**Conclusions:** Key symptoms improved from baseline in both treatment arms in FLAURA. Key symptom improvements that were both statistically significant and clinically relevant were not observed in favor of either treatment arm.

**Clinical trial registration:** NCT02296125

© 2019 The Authors. Published by Elsevier Ltd. This is an open access article under the CC BY-NC-ND license (<http://creativecommons.org/licenses/by-nc-nd/4.0/>).

## 1. Introduction

For patients with advanced non-small-cell lung cancer (NSCLC) and sensitizing epidermal growth factor receptor mutations (EGFRm), the introduction of targeted therapy with EGFR-tyrosine kinase inhibitors (TKIs) has markedly improved clinical outcomes [1–7].

Symptom management is crucial in the treatment of patients with advanced NSCLC. Cough, dyspnea, chest pain, fatigue, and appetite loss are key patient-reported symptoms and have a marked negative impact on health-related quality of life (HRQoL) [8,9]. Patients with advanced NSCLC who received first-line treatment with erlotinib, gefitinib, or afatinib experienced improvements in symptoms and HRQoL compared with patients who received chemotherapy [10–12]. In the LUX-Lung 7 trial that compared first-line afatinib and gefitinib, similar improvements in patient-reported outcomes (PROs) were observed in both treatment arms [13]. In the ARCHER 1050 trial, progression-free survival (PFS) and overall survival (OS) were longer with dacomitinib than with gefitinib in the first-line treatment of patients with NSCLC, but improvements in global HRQoL were seen only with gefitinib [6,14].

Osimertinib is an oral, irreversible, central nervous system (CNS)-active, third-generation EGFR-TKI with preclinical and clinical evidence of potent activity against EGFRm NSCLC and the T790M resistance mutation, the most common cause of resistance to early-generation EGFR-TKIs [15–18]. The greater selectivity for mutated *EGFR* and relative sparing of wild-type *EGFR* also mean that osimertinib is associated with less toxicity than earlier EGFR-TKIs [16]. In the phase 3 FLAURA trial of first-line treatment, osimertinib significantly improved PFS compared with erlotinib or gefitinib (18.9 months vs 10.2 months; hazard ratio [HR]: 0.46; 95% confidence interval [CI]: 0.37–0.57;  $p < 0.001$ ) [16]. Rates for adverse events were lower with osimertinib than with erlotinib/ gefitinib for grade  $\geq 3$  (34% vs 45%) and for adverse events leading to

permanent treatment discontinuation (13% vs 18%) [16]. Based on these results, osimertinib was approved as first-line treatment for patients with EGFRm advanced NSCLC and is recommended by National Comprehensive Cancer Network guidelines as the preferred first-line treatment for patients with EGFRm advanced or metastatic NSCLC [19].

PROs were part of secondary outcome measures in the FLAURA trial and were assessed prospectively using the European Organisation for Research and Treatment of Cancer (EORTC) Quality of Life Questionnaire Lung Cancer 13 items (QLQ-LC13) and Quality of Life Questionnaire Core 30 items (QLQ-C30). The aim of the current analysis was to evaluate the symptom burden in the FLAURA trial, in patients in the osimertinib arm compared with those in the erlotinib/ gefitinib arm.

## 2. Methods

### 2.1. Study design and patients

FLAURA (NCT02296125) was a multinational, phase 3, double-blind, double-dummy, randomized trial [16]. The methods and primary efficacy results have been reported in detail [16]. In brief, eligible patients had locally advanced or metastatic EGFRm (exon 19 deletion or L858R) NSCLC and were eligible for first-line therapy with an EGFR-TKI. Patients were randomized 1:1 to receive oral osimertinib 80 mg once daily ( $n = 279$ ) or either oral gefitinib 250 mg once daily or oral erlotinib 150 mg once daily ( $n = 277$ ). The cut-off date for the current analysis was 12 June 2017.

FLAURA was conducted in accordance with the Declaration of Helsinki and is consistent with the International Conference on Harmonisation and Good Clinical Practice, applicable regulatory requirements, and the AstraZeneca Bioethics Policy. The study was approved by the institutional review board and/or independent ethics committee associated with each study center. All patients provided written

informed consent before any study-specific procedures were performed.

## 2.2. Questionnaires

Patients completed the questionnaires using electronic devices. The EORTC QLQ-LC13 was completed at baseline, then every week for 6 weeks, followed by every 3 weeks. The EORTC QLQ-C30 was completed at baseline and then every 6 weeks. The EORTC QLQ-LC13 is a 13-item lung-cancer-specific questionnaire that measures disease-related symptoms and treatment-related side effects [20]. The EORTC QLQ-C30 is a 30-item cancer questionnaire that measures symptoms and functional aspects commonly related to cancer [21]. An outcome variable consisting of a score from 0 to 100 was derived from each of the symptom scales and items in the two questionnaires [20,21]. A higher score on the symptom scale represents more/worse symptoms [20,21]. Higher functional scores represent a higher (“better”) HRQoL or level of functioning [20,21]. For both questionnaires, a difference in score of at least 10 points was considered clinically relevant, corresponding to at least a moderate change in HRQoL [22].

The prespecified key symptoms of importance in advanced NSCLC were cough, dyspnea, chest pain, appetite loss, and fatigue [8,9]. Changes from baseline in these symptoms were prespecified as key endpoints (Supplementary Table 1).

Changes from baseline in QLQ-C30 global health status/quality of life (QoL) and functioning from baseline were assessed in a *post hoc* analysis.

## 2.3. Data analyses

Scores for EORTC QLQ-LC13 and QLQ-C30 prespecified key symptoms were summarized descriptively in the full analysis set. The analyses for each item used all data up to disease progression and beyond. Changes in scores from baseline until randomized treatment discontinuation were assessed using mixed-effects model for repeated measures (MMRM) analysis. Missing data were not imputed. The *p* value was determined using MMRM analysis, with patient, treatment, visit, and treatment by visit interaction as explanatory variables and baseline symptom score and baseline symptom score by visit interaction as covariates. Patient was fitted as a random effect, and compound symmetry covariance structure was used for all models. The mean differences for each symptom are reported with corresponding 95% CIs. A sensitivity analysis was conducted that used PRO data from baseline to 9 months, and results were compared for consistency with those from the main analysis.

The proportion of patients with clinically relevant improvements in key symptoms, defined as a decrease in score from baseline of at least 10 at two consecutive assessments at least 21 days apart, was compared using

Table 1  
EORTC QLQ-LC13 and QLQ-C30 scores at baseline.

QLQ-LC13	Osimertinib, mean (SD)	Erlotinib/ gefitinib, mean (SD)
<b>Scale/items</b>		
Cough <sup>a</sup>	32.8 (27.2)	33.5 (28.8)
Hemoptysis	3.9 (14.3)	2.9 (10.7)
Dyspnea <sup>a</sup>	22.5 (23.1)	25.0 (22.8)
Sore mouth	4.4 (13.2)	5.2 (14.4)
Dysphagia	5.0 (14.0)	5.3 (13.9)
Peripheral neuropathy	6.6 (15.5)	10.1 (20.1)
Alopecia	5.1 (15.0)	6.4 (16.4)
Chest pain <sup>a</sup>	19.5 (25.3)	20.8 (25.7)
Pain in arm or shoulder	17.6 (24.4)	19.1 (26.3)
Pain in other parts	23.3 (25.7)	22.4 (25.7)
Pain medication/help	60.1 (25.4)	62.6 (25.3)
<b>QLQ-C30</b>		
<b>Symptom scale/items</b>		
Fatigue <sup>a</sup>	32.2 (24.9)	35.8 (26.2)
Nausea and vomiting	7.3 (14.9)	7.2 (13.6)
Pain	25.8 (27.5)	27.2 (27.8)
Dyspnea	24.4 (28.4)	25.2 (27.8)
Insomnia	25.6 (27.9)	30.2 (28.4)
Appetite loss <sup>a</sup>	22.7 (28.5)	25.6 (29.9)
Constipation	13.3 (23.0)	16.2 (25.2)
Diarrhea	5.4 (14.6)	5.7 (15.1)
Financial difficulties	15.4 (24.3)	16.5 (26.7)
<b>Global health status/QoL</b>	62.5 (23.2)	58.8 (22.8)
<b>Functional scales</b>		
Physical functioning	79.6 (21.6)	75.7 (21.0)
Role functioning	77.8 (28.2)	75.0 (29.1)
Emotional functioning	74.8 (20.0)	72.9 (22.1)
Cognitive functioning	86.5 (18.4)	84.6 (19.5)
Social functioning	80.6 (24.6)	77.3 (26.1)

EORTC, European Organisation for Research and Treatment of Cancer; QLQ-LC13, Quality of Life Questionnaire Lung Cancer 13 items; QLQ-C30, Quality of Life Questionnaire Core 30 items; QoL, quality of life; SD, standard deviation.

<sup>a</sup> Prespecified key symptom.

logistic regression, with a factor for treatment arm. Odds ratios with 95% CIs are reported.

Time-to-symptom deterioration, defined as time from randomization until the date of the first clinically relevant symptom deterioration or death from any cause, was assessed for the five key symptoms until randomized treatment discontinuation, using Kaplan–Meier analysis. The difference in time-to-symptom deterioration was assessed by log-rank test, and *p* values are reported.

Owing to the exploratory nature, all analyses must be interpreted conservatively given the multiple scales, time points, and hypotheses (a two-sided 5% significance level has been used for interpretation purposes only, no adjustments have been made for multiplicity).

## 3. Results

The median duration of treatment was 16.2 months in the osimertinib arm and 11.5 months in the erlotinib/

gefitinib arm at the time of data cut-off [16]. The median duration of follow-up for PFS was 15.0 months in the osimertinib arm and 9.7 months in the erlotinib/gefitinib arm [16]. Ninety-one (66.9%) patients in the osimertinib arm and 145 (70.4%) patients in the erlotinib/gefitinib arm remained on randomized treatment after progression, for a similar length of time.

### 3.1. Questionnaire completion rates

Questionnaire completion rates at baseline were >90% in both arms. Completion rates declined faster in the erlotinib/gefitinib arm than in the osimertinib arm, likely reflecting differences in PFS rates between the two treatment arms (Supplementary Tables 2 and 3).

### 3.2. Baseline symptoms

Mean key symptom scores at baseline were low and similar in the osimertinib and erlotinib/gefitinib arms (Table 1). Many patients responded “not at all” to the key symptom severity questions, and most patients who reported baseline symptoms graded their severity as “a little” (Fig. 1). The proportion of patients reporting at least “a little” severity was lowest for “dyspnea when

rested” (osimertinib: 23.0%; erlotinib/gefitinib: 30.3%) and highest for “felt tired” (66.3% vs 70.8%) (Fig. 1).

### 3.3. Changes from baseline

Key symptoms improved from baseline until treatment discontinuation in both groups (Table 2). None of the improvements in key symptoms reached the predefined 10-point threshold for clinical relevance at 5% significance level. For chest pain, improvements from baseline were statistically significantly better with osimertinib than with erlotinib/gefitinib (mean change in score: -6.84 vs -3.88; estimated difference: -2.96; 95% CI: -5.47, -0.45; *p* = 0.021). Improvements in cough were seen as early as week 1 in both treatment arms (mean change in score, osimertinib: -6.6; erlotinib/gefitinib: -4.9) and were maintained throughout the study period. Results from the sensitivity analysis using data from baseline to 9 months were consistent with those from the main analysis, except for chest pain (Supplementary Table 4).

Similar proportions of patients in the two treatment arms had clinically relevant improvements in key symptoms during randomized treatment. No significant difference in odds of improvement of prespecified key symptoms was detected (Fig. 2).

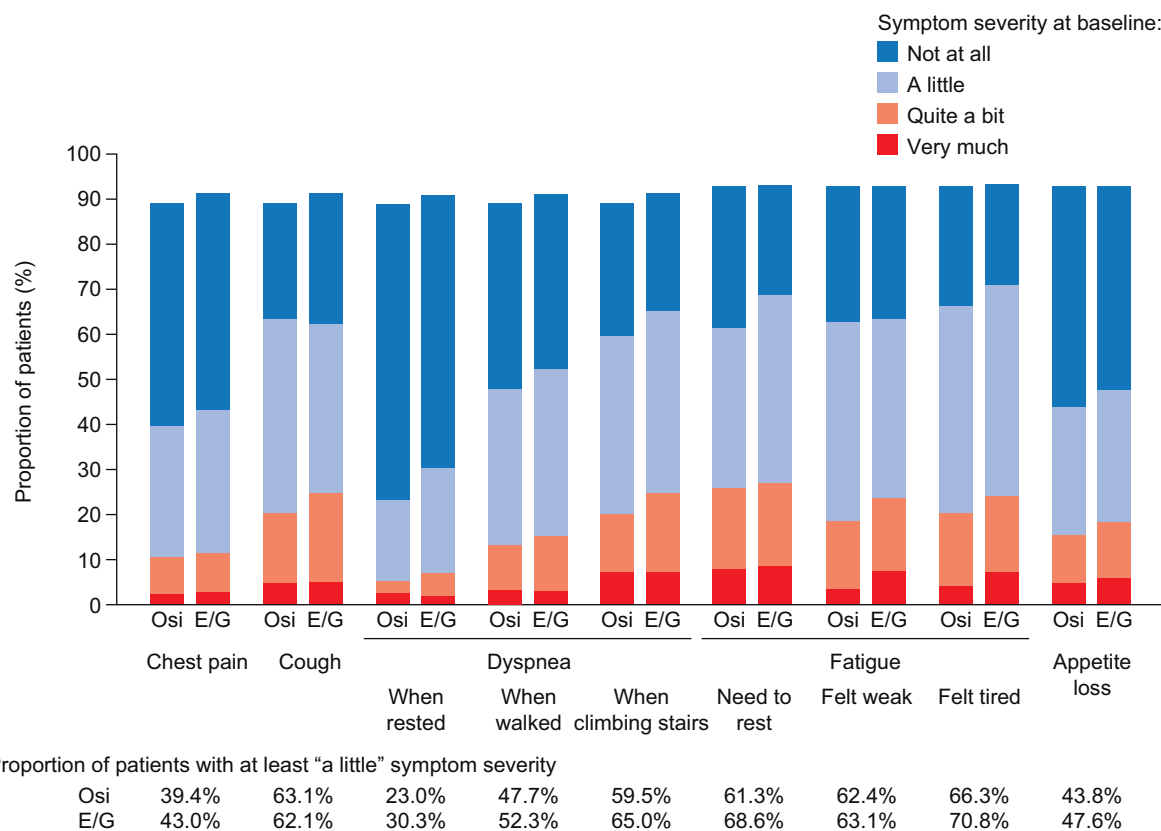


Fig. 1. Proportion of patients in the osimertinib and erlotinib/gefitinib arms reporting key symptoms at baseline, shown by reported symptom severity. E/G, erlotinib/gefitinib; Osi, osimertinib.

Table 2

Changes in key patient-reported symptom scores over time from baseline until randomized treatment discontinuation, assessed using MMRM analysis<sup>a</sup>.

Symptom	Treatment	Adjusted mean (95% CI)	Estimated treatment difference <sup>b</sup> (95% CI)	<i>p</i> value
Cough	Osimertinib	−10.14 (−12.12, −8.16)	−1.96 (−4.83, 0.91)	0.180
	Erlotinib/gefitinib	−8.18 (−10.25, −6.10)		
Dyspnea	Osimertinib	−3.19 (−4.92, −1.47)	−1.99 (−4.45, 0.47)	0.113
	Erlotinib/gefitinib	−1.20 (−2.95, 0.54)		
Chest pain	Osimertinib	−6.84 (−8.58, −5.10)	−2.96 (−5.47, −0.45)	0.021
	Erlotinib/gefitinib	−3.88 (−5.69, −2.07)		
Fatigue	Osimertinib	−3.30 (−5.45, −1.16)	0.01 (−3.22, 3.25)	0.993
	Erlotinib/gefitinib	−3.32 (−5.68, −0.95)		
Appetite loss	Osimertinib	−5.81 (−8.24, −3.39)	−1.46 (−5.08, 2.15)	0.427
	Erlotinib/gefitinib	−4.35 (−7.04, −1.66)		

CI, confidence interval; MMRM, mixed-effects model for repeated measures.

Note: Owing to the exploratory nature, all analyses must be interpreted conservatively given the multiple scales, time points, and hypotheses (a two-sided 5% significance level has been used for interpretation purposes only; no adjustments have been made for multiplicity).

<sup>a</sup> The *p* value was determined using MMRM analysis, with patient, treatment, visit, and treatment by visit interaction as explanatory variables and with baseline symptom score and baseline symptom score by visit interaction as covariates. Patient was fitted as a random effect, and compound symmetry covariance structure was used for all models.

<sup>b</sup> Osimertinib minus erlotinib/gefitinib. A difference of less than 0 favors osimertinib for symptom scales.

The proportion of patients who had a clinically relevant symptom deterioration event from randomization until randomized treatment discontinuation was the lowest for chest pain (osimertinib: 37.3%; erlotinib/gefitinib: 33.6%) and highest for dyspnea (osimertinib: 57.0%; erlotinib/gefitinib: 56.3%) (Table 3). For patients with a clinically relevant deterioration event, the median time from randomization to the first event was similar in the two treatment arms, with overlapping 95% CIs for medians (Table 3 and Supplementary Fig. 1).

Improvements in global health status/QoL and functional scores from baseline to randomized treatment discontinuation were seen in both treatment arms (Fig. 3). Improvements in the osimertinib arm were statistically significantly greater than in the erlotinib/gefitinib arm for emotional functioning (8.79 vs 4.91; *p* = 0.004) and social functioning (7.66 vs 1.74; *p* < 0.001). Cognitive functioning remained stable in the osimertinib arm but deteriorated in the erlotinib/gefitinib arm (0.03 vs −3.91; *p* = 0.005). None of the mean changes reached the 10-point improvement threshold for clinical relevance.

#### 4. Discussion

In the FLAURA trial, first-line treatment with osimertinib demonstrated superior efficacy to erlotinib or gefitinib in patients with EGFRm advanced NSCLC, including in patients with CNS metastases at trial entry [16]. The PRO analyses presented here show improvements in key lung cancer symptoms in both treatment arms from baseline until randomized treatment discontinuation. Statistically significant differences in favor of osimertinib were observed for changes from baseline in chest pain, and emotional, social, and cognitive

functioning, although these differences did not meet the predefined threshold for clinical relevance.

The overall burden of key lung cancer symptoms was low at baseline, with most patients in both treatment arms reporting symptom severity of “not at all” or “a little.” The low baseline symptom burden, which is common in patients receiving first-line treatment for NSCLC [23], poses technical challenges in the measurement of improvements. A 10-point change in QLQ-C30 score is commonly used as the minimal clinically important difference in phase 3 advanced NSCLC trials [24]. However, results from the French Cooperative Thoracic Intergroup (IFCT) indicate that a lower, 5-point cut-off could be clinically relevant [25]. Use of the IFCT definition for the data reported here reveals clinically relevant improvements during randomized treatment in both arms for cough and in the osimertinib arm for chest pain, appetite loss, global health status/QoL, and emotional and social functioning.

Only one-third to just over half of patients remaining on protocol therapy in the current analysis experienced a clinically relevant deterioration in key lung cancer symptoms at any time from randomization to randomized treatment discontinuation. Among patients who experienced a clinically relevant deterioration in symptoms, the time to the first recorded event was similar in the two treatment arms. A challenge in clinical oncology research is the lack of a standardized definition or method of analysis for deterioration. Patients may experience only asymptomatic progression such as radiological progression (e.g. a new asymptomatic lesion) or symptomatic progression involving nonkey symptoms (e.g. due to CNS metastasis). In FLAURA, sites of progression differed between treatment arms. Furthermore, patients in the erlotinib/gefitinib arm progressed significantly earlier than those in the osimertinib arm, making those remaining on treatment

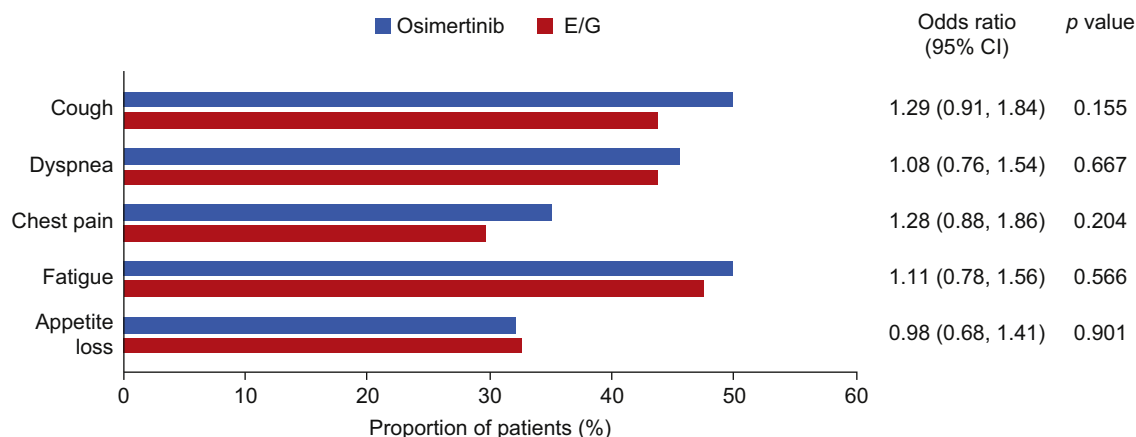


Fig. 2. Proportion of patients with clinically relevant improvements in key symptoms. CI, confidence interval; E/G, erlotinib/gefitinib. The symptom improvement rate was based on a decrease in score from baseline  $\geq 10$  at two consecutive assessments  $\geq 21$  days apart. The denominator n is all patients with nonmissing baseline values.

highly selected. There is thus a bias in the sensitivity of the time to deterioration analysis.

The FLAURA trial showed a significant and clinically meaningful improvement in PFS of osimertinib compared with standard of care (18.9 months vs 10.2 months), but with no clinically meaningful difference between arms in key symptoms. There may be a few reasons for this apparent disparity. PFS is measured by radiological progression (increase in tumor size; new lesion). Progression can be asymptomatic, depending on the location and nature of the tumor(s) leading to progression, and it is common practice for patients to continue treatment in such cases. In this trial, approximately 70% of patients continued randomized treatment beyond progression in both treatment arms for a similar median duration. If a progression event is symptomatic, it may lead to symptoms that are not detected in the PRO data or to a small increase in symptoms that is not considered clinically meaningful using current analytical methods.

In the FLAURA trial, 19% of patients in the osimertinib arm and 23% in the erlotinib/gefitinib arm had known or treated CNS metastases at trial entry [16]. Irrespective of status of CNS metastases at baseline, the rate of CNS progression was higher in the erlotinib/gefitinib arm (15%) than in the osimertinib arm (6%) [16]. Cognitive function deteriorated in the erlotinib/gefitinib arm in the current analysis but did not change from baseline in the osimertinib arm, which may reflect differences in CNS progression between the two treatment arms.

In real-world management of patients with advanced NSCLC, incremental gains in PFS or OS are regarded as clinically meaningful only if they are achieved without a marked negative effect on HRQoL [26]. As such, it is important to record PROs (symptoms, function, HRQoL) in trials. Results from FLAURA demonstrate that the efficacy of osimertinib was superior to that of first- and second-generation EGFR-TKIs, without increased toxicity [16]. Improvements in key lung cancer

Table 3

Time to deterioration in key patient-reported symptom scores from baseline to discontinuation of randomized treatment<sup>a</sup>.

Symptom	Treatment	Patients with deterioration event, n (%) <sup>b</sup>	Median time to deterioration (95% CI)	Probability of no deterioration (%)	
				at 6 months	at 12 months
Cough	Osimertinib	109 (44.0)	NR (9.92–NR)	63.08	55.44
	Erlotinib/gefitinib	113 (44.8)	13.08 (8.25–NR)	58.88	52.45
Dyspnea	Osimertinib	159 (64.1)	2.79 (1.38–6.18)	44.00	33.41
	Erlotinib/gefitinib	156 (61.9)	4.14 (2.00–6.90)	44.85	37.23
Chest pain	Osimertinib	104 (41.9)	21.36 (15.24–NR)	67.65	59.95
	Erlotinib/gefitinib	93 (36.9)	NR (16.53–NR)	67.21	60.83
Fatigue	Osimertinib	150 (58.1)	6.87 (4.17–11.01)	50.59	41.66
	Erlotinib/gefitinib	138 (53.7)	8.25 (5.62–10.61)	56.76	39.13
Appetite loss	Osimertinib	110 (42.6)	NR (13.77–NR)	69.46	59.93
	Erlotinib/gefitinib	102 (39.7)	15.24 (11.01–NR)	65.12	56.49

CI, confidence interval; NR, not reached.

<sup>a</sup> Kaplan–Meier analysis. Time-to-symptom deterioration was defined as the time from randomization until the date of the first clinically relevant symptom deterioration (an increase in the score from baseline  $\geq 10$  for symptom scales) or death (from any cause).

<sup>b</sup> The denominator n is all patients with nonmissing baseline values.

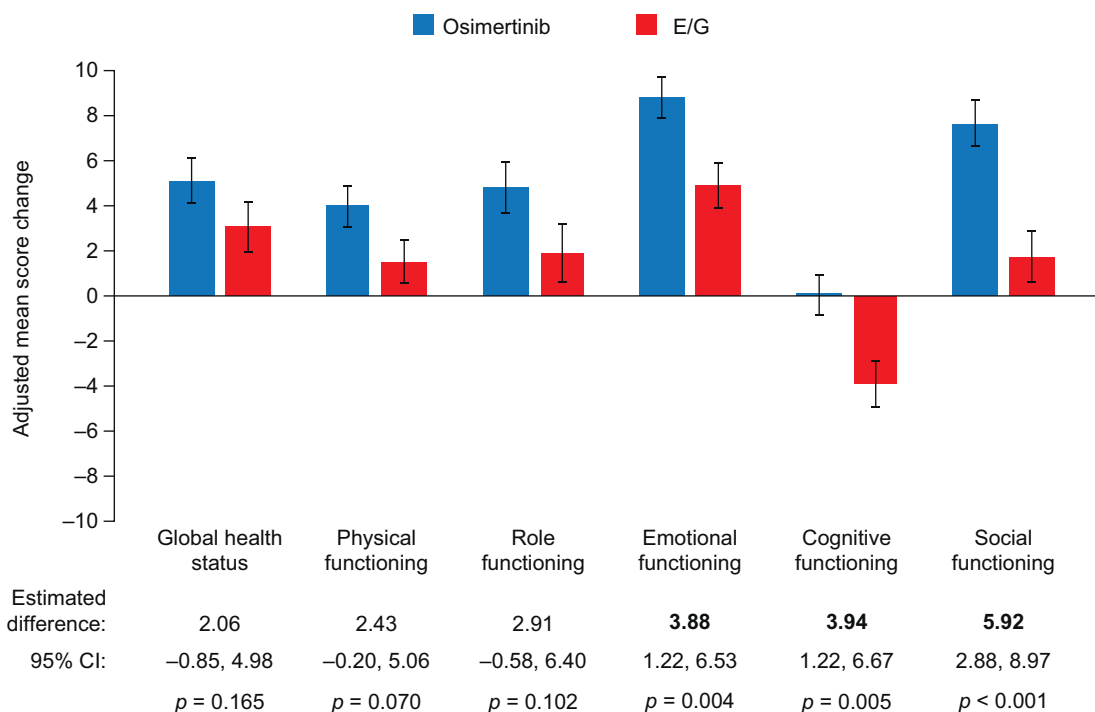


Fig. 3. Changes in global health status/QoL and functioning scores from baseline until discontinuation of randomized treatment, assessed using MMRM analysis. Error bars denote standard errors. CI, confidence interval; E/G, erlotinib/gefitinib; MMRM, mixed-effects model for repeated measures, QoL, quality of life. *p* values were determined using an MMRM analysis, with patient, treatment, visit, and treatment by visit interaction as explanatory variables and baseline symptom score and baseline symptom score by visit interaction as covariates. Treatment, visit, and treatment by visit interaction were fitted as fixed effects in the model; patient was fitted as a random effect. Compound symmetry was used as the covariance structure for all models. A difference higher than 0 favors osimertinib for global health status/QoL and functional scales.

symptoms, global health status/QoL, and functioning were observed up to treatment discontinuation, with the median duration of response approximately twice as long in the osimertinib arm as in the erlotinib/gefitinib arm [16].

The FLAURA PRO assessments had several strengths. The EORTC QLQ-LC13 and QLQ-C30 questionnaires are well established and widely used in advanced NSCLC treatment trials [11,27–30], and have been thoroughly validated [20,21,31]. Questionnaire completion rates were high, with more than 70% of patients in both treatment arms completing the questionnaires at most time points. Data for PRO assessments were collected at a large number of time points.

The current report highlights limitations inherent to trials of targeted therapy in advanced NSCLC, including the need to identify the most appropriate analyses for time to deterioration and CNS progression when disease and therapy burden may be low. The current report does not include an analysis of whether CNS metastases were associated with differences in PROs. The MMRM analysis used all available data, which assumes that characteristics of patients with incomplete questionnaires were similar to those with complete questionnaires. PROs were secondary outcome measures in FLAURA, and, as such, the trial was not powered for each PRO

hypothesis. PRO results should thus be interpreted with caution and are considered exploratory.

In conclusion, PRO results from FLAURA show improvements from baseline in key lung cancer symptoms in both treatment arms. Improvements in key symptoms that were both statistically significant and clinically relevant were not observed in favor of either treatment arm. Further work may be beneficial to explore the effects of CNS metastases on PROs and definitions of improvement and deterioration.

### Funding

The study (NCT02296125) was funded by AstraZeneca, Cambridge, UK, the manufacturer of osimertinib.

### Conflict of interest statement

N.B.L. has received fees for independent continuing medical education from AstraZeneca, Bristol-Myers Squibb and Merck Sharp & Dohme and research funding from Array. N.K. has no disclosures to report. K.N. has received research funding from A2 Healthcare, AbbVie, Astellas Pharma, Bristol-Myers Squibb, Chugai Pharmaceutical, Daiichi Sankyo, Eisai, Eli Lilly, EP-

CRSU, Gritstone Oncology, ICON Japan, inVentiv Health, Linical, Merck Sharp & Dohme, Novartis, Ono Pharmaceutical, Parexel International, Quintiles, Taiho Pharmaceutical, and Takeda Pharmaceutical and fees from Astellas Pharma, AstraZeneca, Bristol-Myers Squibb, Eli Lilly, Merck Sharp & Dohme, Nichi-Iko Pharmaceutical, Nippon Boehringer Ingelheim, Novartis, Ono Pharmaceutical, Pfizer, Symbio Pharmaceuticals, and Taiho Pharmaceutical. He has also acted as a consultant for Astellas Pharma and Ono Pharmaceutical. B.C.C. has no disclosures to report. J.E.G. is an advisor for and receives research funding from AstraZeneca. T.H. is a consultant statistician (PHASTAR) for AstraZeneca. A.W. and A.R. are employees of AstraZeneca and hold AstraZeneca shares. S.N. is a speaker for AstraZeneca, Bristol-Myers Squibb, Eli Lilly, Merck Sharp & Dohme, Roche, and Takeda Pharmaceutical.

## Acknowledgments

We thank the patients and families that participated in the FLAURA trial. Medical writing support was provided by Anja Becher PhD of Oxford PharmaGenesis, Oxford, UK, funded by AstraZeneca. Data underlying the findings described in this manuscript may be obtained in accordance with AstraZeneca's data sharing policy described at <https://astrazenecagrouptrials.pharmacm.com/ST/Submission/Disclosure>.

## Appendix A. Supplementary data

Supplementary data to this article can be found online at <https://doi.org/10.1016/j.ejca.2019.11.006>.

## References

- [1] Zhou C, Wu YL, Chen G, Feng J, et al. Erlotinib versus chemotherapy as first-line treatment for patients with advanced EGFR mutation-positive non-small-cell lung cancer (OPTIMAL, CTONG-0802): a multicentre, open-label, randomised, phase 3 study. *Lancet Oncol* 2011;12(8):735–42.
- [2] Maemondo M, Inoue A, Kobayashi K, Sugawara S, et al. Gefitinib or chemotherapy for non-small-cell lung cancer with mutated EGFR. *N Engl J Med* 2010;362(25):2380–8.
- [3] Fukuoka M, Wu YL, Thongprasert S, Sunpaweravong P, et al. Biomarker analyses and final overall survival results from a phase III, randomized, open-label, first-line study of gefitinib versus carboplatin/paclitaxel in clinically selected patients with advanced non-small-cell lung cancer in Asia (IPASS). *J Clin Oncol* 2011; 29(21):2866–74.
- [4] Wu YL, Zhou C, Hu CP, Feng J, et al. Afatinib versus cisplatin plus gemcitabine for first-line treatment of Asian patients with advanced non-small-cell lung cancer harbouring EGFR mutations (LUX-Lung 6): an open-label, randomised phase 3 trial. *Lancet Oncol* 2014;15(2):213–22.
- [5] Yang JC, Wu YL, Schuler M, Sebastian M, et al. Afatinib versus cisplatin-based chemotherapy for EGFR mutation-positive lung adenocarcinoma (LUX-Lung 3 and LUX-Lung 6): analysis of overall survival data from two randomised, phase 3 trials. *Lancet Oncol* 2015;16(2):141–51.
- [6] Wu YL, Cheng Y, Zhou X, Lee KH, et al. Dacomitinib versus gefitinib as first-line treatment for patients with EGFR-mutation-positive non-small-cell lung cancer (ARCHER 1050): a randomised, open-label, phase 3 trial. *Lancet Oncol* 2017;18(11): 1454–66.
- [7] Park K, Tan EH, O'Byrne K, Zhang L, et al. Afatinib versus gefitinib as first-line treatment of patients with EGFR mutation-positive non-small-cell lung cancer (LUX-Lung 7): a phase 2B, open-label, randomised controlled trial. *Lancet Oncol* 2016;17(5): 577–89.
- [8] Iyer S, Roughley A, Rider A, Taylor-Stokes G. The symptom burden of non-small cell lung cancer in the USA: a real-world cross-sectional study. *Support Care Cancer* 2014;22(1):181–7.
- [9] Iyer S, Taylor-Stokes G, Roughley A. Symptom burden and quality of life in advanced non-small cell lung cancer patients in France and Germany. *Lung Cancer* 2013;81(2):288–93.
- [10] Chen HJ, Yan HH, Yang JJ, Chen ZH, et al. Disease flare after EGFR tyrosine kinase inhibitor cessation predicts poor survival in patients with non-small cell lung cancer. *Pathol Oncol Res* 2013;19(4):833–8.
- [11] Geater SL, Xu CR, Zhou C, Hu CP, et al. Symptom and quality of life improvement in LUX-Lung 6: an open-label phase III study of afatinib versus cisplatin/gemcitabine in Asian patients with EGFR mutation-positive advanced non-small-cell lung cancer. *J Thorac Oncol* 2015;10(6):883–9.
- [12] Oizumi S, Kobayashi K, Inoue A, Maemondo M, et al. Quality of life with gefitinib in patients with EGFR-mutated non-small cell lung cancer: quality of life analysis of North East Japan Study Group 002 Trial. *Oncologist* 2012;17(6):863–70.
- [13] Hirsh V, Yang JC, Tan EH, O'Byrne KJ, et al. First-line afatinib vs gefitinib for patients with EGFR mutation positive NSCLC (LUX-Lung 7): patient-reported outcomes and impact of dose modifications on efficacy and adverse events. *J Clin Oncol* 2016;34 (suppl)(15):9046 (abstract).
- [14] Mok T, Cheng Y, Zhou X, Lee KH, et al. Dacomitinib (daco) versus gefitinib (gef) for first-line treatment of advanced NSCLC (ARCHER 1050): final overall survival (OS) analysis. *J Clin Oncol* 2018;36(suppl):9004 (abstract).
- [15] Mok TS, Wu YL, Ahn MJ, Garassino MC, et al. Osimertinib or platinum-pemetrexed in EGFR T790M-positive lung cancer. *N Engl J Med* 2017;376(7):629–40.
- [16] Soria JC, Ohe Y, Vansteenkiste J, Reungwetwattana T, et al. Osimertinib in untreated EGFR-mutated advanced non-small-cell lung cancer. *N Engl J Med* 2018;378(2):113–25.
- [17] Ballard P, Yates JW, Yang Z, Kim DW, et al. Preclinical comparison of osimertinib with other EGFR-TKIs in EGFR-mutant NSCLC brain metastases models, and early evidence of clinical brain metastases activity. *Clin Cancer Res* 2016;22(20):5130–40.
- [18] Cross DA, Ashton SE, Ghiorghiu S, Eberlein C, et al. AZD9291, an irreversible EGFR TKI, overcomes T790M-mediated resistance to EGFR inhibitors in lung cancer. *Cancer Discov* 2014; 4(9):1046–61.
- [19] National Comprehensive Cancer Network® (NCCN®). Non-small cell lung cancer V1.2019. In: Referenced with permission from the NCCN clinical practice guidelines in oncology (NCCN Guidelines®) for non-small cell lung cancer V.1.2019. © National Comprehensive Cancer Network, Inc; 2019. All rights reserved. To view the most recent and complete version of the guideline, go online to [NCCN.org](http://NCCN.org). 2019.
- [20] Bergman B, Aaronson NK, Ahmedzai S, Kaasa S, et al. The EORTC QLQ-LC13: a modular supplement to the EORTC Core quality of life questionnaire (QLQ-C30) for use in lung cancer clinical trials. EORTC study group on quality of life. *Eur J Cancer* 1994;30A(5):635–42.
- [21] Aaronson NK, Ahmedzai S, Bergman B, Bullinger M, et al. The European Organization for Research and Treatment of Cancer



- QLQ-C30: a quality-of-life instrument for use in international clinical trials in oncology. *J Natl Cancer Inst* 1993;85(5):365–76.
- [22] Osoba D, Rodrigues G, Myles J, Zee B, et al. Interpreting the significance of changes in health-related quality-of-life scores. *J Clin Oncol* 1998;16(1):139–44.
- [23] Scott NW, Fayers PM, Aaronson NK, Bottomley A, et al. EORTC QLQ-C30 reference values. Available from: [http://groups.eortc.be/qol/sites/default/files/img/newsletter/reference\\_values\\_manual2008.pdf](http://groups.eortc.be/qol/sites/default/files/img/newsletter/reference_values_manual2008.pdf). [Accessed 1 February 2018].
- [24] Fiteni F, Anota A, Westeel V, Bonnetain F. Methodology of health-related quality of life analysis in phase III advanced non-small-cell lung cancer clinical trials: a critical review. *BMC Canc* 2016;16:122.
- [25] Westeel V, Eberst G, Anota A, Scherpereel A, et al. Impact on health-related quality of life of the addition of bevacizumab to cisplatin-pemetrexed in malignant pleural mesothelioma in the MAPS phase III trial. *J Clin Oncol* 2018;36(suppl):8505 (abstract).
- [26] Villaruz LC, Socinski MA. The clinical viewpoint: definitions, limitations of RECIST, practical considerations of measurement. *Clin Cancer Res* 2013;19(10):2629–36.
- [27] Bezzak A, Tu D, Seymour L, Clark G, et al. Symptom improvement in lung cancer patients treated with erlotinib: quality of life analysis of the National Cancer Institute of Canada Clinical Trials Group Study BR.21. *J Clin Oncol* 2006;24(24):3831–7.
- [28] Blackhall F, Kim DW, Besse B, Nokihara H, et al. Patient-reported outcomes and quality of life in PROFILE 1007: a randomized trial of crizotinib compared with chemotherapy in previously treated patients with ALK-positive advanced non-small-cell lung cancer. *J Thorac Oncol* 2014;9(11):1625–33.
- [29] Brahmer JR, Rodriguez-Abreu D, Robinson AG, Hui R, et al. Health-related quality-of-life results for pembrolizumab versus chemotherapy in advanced, PD-L1-positive NSCLC (KEY-NOTE-024): a multicentre, international, randomised, open-label phase 3 trial. *Lancet Oncol* 2017;18(12):1600–9.
- [30] Yang JC, Hirsh V, Schuler M, Yamamoto N, et al. Symptom control and quality of life in LUX-Lung 3: a phase III study of afatinib or cisplatin/pemetrexed in patients with advanced lung adenocarcinoma with EGFR mutations. *J Clin Oncol* 2013;31(27):3342–50.
- [31] Sprangers MA, Groenvold M, Arraras JI, Franklin J, et al. The European Organization for Research and Treatment of Cancer breast cancer-specific quality-of-life questionnaire module: first results from a three-country field study. *J Clin Oncol* 1996;14(10):2756–68.