

# Overall Survival in Men With Bone Metastases From Castration-Resistant Prostate Cancer Treated With Bone-Targeting Radioisotopes

## A Meta-analysis of Individual Patient Data From Randomized Clinical Trials

Safae Terrisse, MD; Eleni Karamouza, MSc; Chris C. Parker, MD; A. Oliver Sartor, MD; Nicholas D. James, MD; Sarah Pirrie, MSc; Laurence Collette, PhD; Bertrand F. Tombal, MD; Jad Chahoud, MD; Sigbjørn Smeland, MD; Bjørn Erikstein, MD, PhD; Jean-Pierre Pignon, MD, PhD; Karim Fizazi, MD, PhD; Gwénaél Le Teuff, PhD; for the MORPHEP Collaborative Group

**IMPORTANCE** Both  $\alpha$ -emitting and  $\beta$ -emitting bone-targeted radioisotopes (RIs) have been developed to treat men with metastatic castration-resistant prostate cancer (CRPC). Only 1 phase 3 randomized clinical trial has demonstrated an overall survival (OS) benefit from an  $\alpha$ -emitting RI, radium 223 ( $^{223}\text{Ra}$ ), vs standard of care. Yet no head-to-head comparison has been done between  $\alpha$ -emitting and  $\beta$ -emitting RIs.

**OBJECTIVE** To assess OS in men with bone metastases from CRPC treated with bone-targeted RIs and to compare the effects of  $\alpha$ -emitting RIs with  $\beta$ -emitting RIs.

**DATA SOURCES** PubMed, Cochrane Library, ClinicalTrials.gov, and meeting proceedings between January 1993 and June 2013 were reviewed. Key terms included *randomized trials*, *radioisotopes*, *radiopharmaceuticals*, and *prostate cancer*. Data were collected, checked, and analyzed from February 2017 to October 2018.

**STUDY SELECTION** Selected trials included patients with prostate cancer, recruited more than 50 patients from January 1993 to June 2013, compared RI use with no RI use (placebo, external radiotherapy, or chemotherapy), and were randomized. Patients were diagnosed with histologically proven prostate cancer and disease progression after both surgical or chemical castration and have evidence of bone metastasis. Nine randomized clinical trials were identified as eligible, but 3 were excluded for insufficient data.

**DATA EXTRACTION AND SYNTHESIS** Individual patient data were requested for each eligible trial, and all data were checked with a standard procedure. The log-rank test stratified by trial was used to estimate hazard ratios (HRs), and a similar fixed-effects (FE) model was used to estimate odds ratios (ORs). The between-trial heterogeneity of treatment effects was evaluated by Cochran test and  $I^2$  and was accounted by a random-effects (RE) model.

**MAIN OUTCOMES AND MEASURES** Overall survival; secondary outcomes were symptomatic skeletal event (SSE)-free survival and adverse events.

**RESULTS** Based on 6 randomized clinical trials including 2081 patients, RI use was significantly associated with OS compared with no RI use (HR, 0.86; 95% CI, 0.77-0.95;  $P = .004$ ) with high heterogeneity ( $\chi^2_5 = 24.46$ ;  $P < .001$ ;  $I^2 = 80\%$ ), but this association disappeared when using an RE model (HR, 0.80; 95% CI, 0.61-1.06;  $P = .12$ ;  $\tau^2 = 0.08$ ). The heterogeneity is explained both by the type of RI and by the inclusion of 2 outlier trials that included 275 patients; the OS benefit was significantly higher with the  $\alpha$ -emitting RI  $^{223}\text{Ra}$  (HR, 0.70; 95% CI, 0.58-0.83) but not significant with the  $\beta$ -emitting RI strontium-89 (HR, 0.96; 95% CI, 0.84-1.10) ( $P$  for interaction = .004). Excluding the outlier trials led to an overall HR of 0.82 (95% CI, 0.73-0.92;  $P < .001$ ) (between-trial heterogeneity:  $\chi^2_3 = 6.51$ ;  $P = .09$ ;  $I^2 = 54\%$ ) using an FE model and an HR of 0.80 (95% CI, 0.65-0.99;  $P = .04$ ;  $\tau^2 = 0.02$ ) using an RE model. The HR for SSE-free survival was 0.81 (95% CI, 0.69-0.93;  $P = .004$ ) (between-trial heterogeneity:  $\chi^2_3 = 6.71$ ;  $P = .08$ ;  $I^2 = 55\%$ ) when using an FE model and was 0.76 (95% CI, 0.58-1.01;  $P = .06$ ;  $\tau^2 = 0.04$ ) when using an RE model. There were more hematological toxic effects with RI use compared with no RI use (OR, 1.48; 95% CI, 1.17-1.88;  $P = .001$ ).

**CONCLUSIONS AND RELEVANCE** In metastatic CRPC, a significant improvement of OS and SSE-free survival was obtained with bone-targeted  $\alpha$ -emitting but not  $\beta$ -emitting RIs. Caution is necessary for generalizability of these results, given the between-trial heterogeneity.

JAMA Oncol. doi:10.1001/jamaoncol.2019.4097  
Published online December 12, 2019.

[+ Invited Commentary](#)

[+ Supplemental content](#)

**Author Affiliations:** Author affiliations are listed at the end of this article.

**Group Information:** Members of the MORPHEP Collaborative Group appear at the end of the article.

**Corresponding Author:** Gwénaél Le Teuff, PhD, Ligue Nationale Contre le Cancer Meta-Analysis Platform, Biostatistics and Epidemiology Unit, Institut Gustave Roussy, 114 Rue Edouard Vaillant, 94805 Villejuif, France (gwenael.leteuff@gustaveroussy.fr).

Prostate cancer currently has the highest incidence and is the second leading cause of cancer death in men in most western countries.<sup>1</sup> Although prostate cancer is initially sensitive to androgen deprivation, most deaths result from progression to castration-resistant prostate cancer (CRPC), with metastases spread usually involving the bones, and bone metastases are the main driver of prognosis.<sup>2</sup> Docetaxel was the first drug with demonstrated survival advantage in CRPC,<sup>3</sup> and since 2010, androgen receptor pathway inhibitors (abiraterone<sup>4</sup> and enzalutamide<sup>5</sup>), a chemotherapy agent (cabazitaxel<sup>6</sup>), and immunotherapy with sipuleucel-T<sup>7</sup> have also been shown to prolong survival. Until recently, many bone-targeting therapies (zoledronic acid,<sup>8</sup> denosumab,<sup>9</sup> and radioisotopes [RIs]<sup>10-12</sup>) were approved on the basis of pain relief and/or risk reduction of skeletal complications (skeletal-related events or symptomatic skeletal events [SSEs]<sup>13,14</sup>) without survival benefit. To our knowledge, radium 223 (<sup>223</sup>Ra), an  $\alpha$ -emitting RI, is the only bone-targeted agent with a clearly demonstrated overall survival (OS) benefit in men with CRPC. In the double-blind, phase 3 Alpharadin in Symptomatic Prostate Cancer Patients (ALSYMPCA) randomized clinical trial,<sup>15</sup> patients with symptomatic CRPC and bone metastases randomly received <sup>223</sup>Ra or a placebo treatment. Radium 223 significantly improved OS with a favorable toxic effect profile.

The main objective of the Meta-analysis of Bone-Targeting Radiopharmaceutical Therapy in Patients With Bone Metastases From Prostate Cancer (MORPHEP) was to evaluate the association of different types of RIs (those emitting  $\alpha$  and  $\beta$  radiation) with OS in men with bone metastases from CRPC. Thus, we aim to study whether the effects of  $\alpha$ -emitting RIs in this setting is only because of their inherent activity or because of differences in study design and patient selection.

## Methods

### Protocol and Registration

This meta-analysis was registered on PROSPERO (CRD42016026842). A collaborative group comprising researchers involved in the randomized clinical trials included in the project (MORPHEP Collaborative Group) was established, and the meta-analysis was conducted and is reported on its behalf. We followed the Preferred Reporting Items for Systematic Reviews and Meta-analyses (PRISMA) reporting guideline for reporting the results of this meta-analysis.

### Study Selection

Selected trials must have (1) included patients with prostate cancer; (2) recruited more than 50 patients; (3) compared RI with placebo, external radiotherapy, or chemotherapy; (4) been randomized; and (5) completed recruitment between January 1993 and June 2013. Patients must have been diagnosed with histologically proven prostate cancer and disease progression after both surgical or chemical castration and have evidence of bone metastasis.

## Key Points

**Question** What is the benefit of bone-targeted radioisotope (RI) use in metastatic castration-resistant prostate cancer, and is there any difference between  $\alpha$ -emitting and  $\beta$ -emitting RIs?

**Finding** This meta-analysis of individual patient data was based on 6 randomized clinical trials including 2081 patients that compared RI use with no RI use study arms with no overall significant difference. While an  $\alpha$ -emitting RI (radium 223) was significantly associated with higher overall survival and higher symptomatic skeletal event-free survival, a  $\beta$ -emitting RI (strontium-89) was not associated with these outcomes.

**Meaning** This meta-analysis suggests a benefit of  $\alpha$ -emitting RIs but not of  $\beta$ -emitting RIs for overall survival and symptomatic skeletal event-free survival, although caution is necessary for generalizability of these results, given the between-trial heterogeneity.

## Search Strategy

Both published and unpublished trials were included in the meta-analysis.<sup>16</sup> To identify as many relevant trials as possible, systematic searches of several sources were carried out using electronic database searching for the period of January 1993 to June 2013. Searching included PubMed (eMethods 1 in the Supplement), the Cochrane Library, handsearching, and internet searching of review articles, meeting proceedings, and 1 trials register (ClinicalTrials.gov). The search was updated during the study by the MORPHEP Collaborative Group.

## Data Collection Process and Quality Control

Individual patient data (IPD) were requested for each eligible trial, including patient and tumor characteristics, dates of randomization, SSEs and death, treatment arm allocation, details on treatments received, and toxic effects. Follow-up information was updated whenever possible. When IPD were not available, all efforts were done to collect detailed summary data. All data were checked with a standard procedure,<sup>17</sup> which follows the recommendations of the Individual Participant Data Meta-analysis Cochrane working group. Internal consistency was checked (eg, chronology of dates, outlier values), and data were compared with trial protocols and published reports. Randomization validity was evaluated by checking patterns of treatment allocation and balance of baseline characteristics between treatment arms. Follow-up of patients was also compared between treatment arms. Data checking on IPD allowed evaluating risk of bias in individual trials.

## Outcomes

The primary end point was OS, defined as the time from randomization date until death or last follow-up. Secondary end points were SSE-free survival and toxic effects. Symptomatic skeletal event-free survival was defined as the time from randomization date to the first of symptomatic pathologic bone fractures, spinal cord compression (SCC), or bone metastasis for which external beam radiotherapy (ERT) or surgical intervention had been performed. Toxic effects included grade 3 and higher hematological toxic effects (hemoglobin, white blood cells, and platelets), nausea and/or vomiting, and febrile neutropenia. Other criteria listed in the protocol, such as

pain relief or quality of life, were not analyzed because data were not homogeneously measured or not available.

### Statistical Analysis

The median follow-up of each trial was estimated using the reverse Kaplan-Meier method,<sup>18</sup> and the overall median follow-up was estimated by the weighted (based on sample size) average of individual median follow-ups. Analyses were stratified by trial. Although a 1-step meta-analysis of IPD was initially planned, a 2-step meta-analysis was performed because working directly on the IPD was not possible for all eligible trials. For time-to-event end points (OS and SSE-free survival), the log-rank expected number of events and variance was used to calculate individual and overall hazard ratios (HRs) of treatment effect (RI use vs no RI use arms) with 95% CIs using a fixed-effects (FE) model.<sup>19</sup> A similar model was used to estimate the odds ratios (ORs) for the toxic effects analyses after excluding studies with more than 20% missing data. We imputed the value 0.5 if no event occurred in an arm. For evaluation of between-trial heterogeneity, refer to eMethods 2 in the Supplement, including the use of a random-effects (RE) model. The Peto method<sup>20</sup> was used to estimate the stratified survival curves comparing the RI use with no RI use arms. From this, the absolute benefits at 1, 2, and more than 2 years with their 95% CIs were estimated. We performed subset analyses to study the association of trial-level characteristics (type of radiation emitted from RI and type of comparison) with treatment effect using a test of heterogeneity between the different groups of trials. We computed residual heterogeneity within groups by subtracting the statistic of the heterogeneity test between groups from the statistic of the overall heterogeneity test.<sup>21</sup> Subgroup analyses for efficacy end points according to age, performance status score (0 to 1 vs 2 or greater), serum prostate-specific antigen (PSA) level, alkaline phosphatase (ALP) level, hemoglobin level, and number of bone metastases at baseline (6 or less vs more than 6) were also performed, and we used the pooling of within-trial covariate interaction method<sup>22</sup> to estimate the interaction between treatment effect and patient subgroups (eMethods 2 in the Supplement). All analyses were carried out by intention to treat, which means that the patients were analyzed according to the treatment allocated irrespective of whether they had received that treatment or not. Unplanned subset toxic effects analyses were performed for hematological and febrile neutropenia. The *P* values for testing the treatment effect and the interactions were calculated from the Wald statistic and between-trials heterogeneity test from the Q-Cochran statistic. These test statistics follow a  $\chi^2$  distribution. All *P* values were 2-sided, and a *P* value less than .05 was considered statistically significant. For tests of heterogeneity and interaction, a *P* value less than .10 was considered significant (eMethods 2 in the Supplement). Analyses were performed using SAS version 9.4 (SAS Institute).

## Results

### Study Selection and Characteristics

A total of 9 randomized clinical trials comparing RI use with no RI use arms between January 1993 and June 2013 were iden-

tified as eligible for the MORPHEP meta-analysis; the PRISMA flow diagram is shown in eFigure 1 in the Supplement. From these 9 eligible trials, IPD or detailed aggregated data were not available for 3 trials<sup>11,23,24</sup> including 341 patients—2 because we could not contact the investigators and 1 because of difficulties to recover data. As a result, 6 trials<sup>15,25-29</sup> including 2081 patients (minimum, 64 patients; maximum, 921 patients), with 2 large randomized clinical trials (ALSYMPCA trial<sup>15</sup> and the Taxane Radioisotope Zoledronic Acid [TRAPEZE] trial<sup>29</sup>) representing 80% of data, were included (eTable 1 in the Supplement). For the TRAPEZE trial,<sup>29</sup> a 2 × 2 randomized trial, all data comparing RI use with no RI use arms (ratio 1:1) were considered, ie, including patients treated or not by zoledronic acid because there is no known interaction between strontium-89 (Sr89) and zoledronic acid. Two trials<sup>15,28</sup> used single <sup>223</sup>Ra RIs compared with placebo (n = 985). Three trials<sup>25,26,29</sup> tested Sr89 combined with either chemotherapy or ERT vs chemotherapy or ERT alone (n = 893). Among them, 1 chemotherapy with Sr89 combination study<sup>25</sup> included only responding or stable patients after an induction chemotherapy (doxorubicin, vinblastine, ketoconazole, and estramustine). One trial<sup>27</sup> compared Sr89 RI use with ERT (n = 203).

The dose received depended on the type of radioemitter: the Sr89 groups received a single 150-MBq dose, while the <sup>223</sup>Ra groups received 50 kBq/kg every 4 weeks for 4 to 6 injections (eTables 1 and 2 in the Supplement). In 2 trials,<sup>15,28</sup> ad hoc summary data were available for data checking, efficacy, and toxic effects analyses, and on request, aggregated data were available for the subgroup analyses.

The overall median (range) follow-up was 26.7 (0.4-188.1) months, and the median (interquartile range) age of patients was 70 (64-75) years. The performance status score was more than 2 in less than 18% of patients overall (ranging from less than 10% in the trial by Tu et al<sup>25</sup> to approximately 40% in the trials by Oosterhof et al<sup>27</sup> and Smeland et al<sup>26</sup>) (Table 1) (eTables 3 and 4 in the Supplement). The proportion of patients with more than 6 bone metastases ranged from 67.2% to 85.9% (Table 1). The details of trials' characteristics are reported in eTables 3 and 4 in the Supplement.

### Risk of Bias Within Studies

All included trials were validated for adequate randomization, blinding, and identical follow-ups between treatment arms. For details, see eTable 5 in the Supplement.

### Treatment Efficacy

Overall, 1495 deaths (71.8%) were observed. In an FE model, RI use was associated with a significant OS benefit compared with no RI use (HR, 0.86; 95% CI, 0.77-0.95; *P* = .004), but there was significant ( $\chi^2_5 = 24.46$ ; *P* < .001) and substantial (*I*<sup>2</sup> = 80%) heterogeneity between trials (Figure 1A). An RE model showed no significant treatment effect (HR, 0.80; 95% CI, 0.61-1.06; *P* = .12;  $\tau^2 = 0.08$ ). The absolute OS difference was 4.7% (95% CI, 0.4-9.0) and 3.8% (95% CI, -0.6 to 8.2) at 1 and 2 years, respectively (Figure 2A). When excluding 2 trials<sup>25,27</sup> with 95% CIs that did not overlap that of the overall treatment effect, the heterogeneity remained significant ( $\chi^2_3 = 6.51$ ; *P* = .09) but decreased to moderate (*I*<sup>2</sup> = 54%) with similar overall treatment

Table 1. Patient Characteristics, Median Follow-up, and Number of Events by Trial and Overall

Characteristic <sup>a</sup>	No. (%)						
	Oosterhof et al <sup>27</sup> (n = 203)	Tu et al <sup>25</sup> (n = 72)	Smeland et al <sup>26</sup> (n = 64)	Nilsson et al <sup>28</sup> (n = 64)	TRAPEZE <sup>29</sup> (n = 757)	ALSYMPCA <sup>15</sup> (n = 921)	Overall (N = 2081)
Age, median (IQR), y	70.0 (65.0-75.0)	67.0 (60.2-70.9)	70.9 (63.8-75.9)	72.5 (68.0-78.0)	68.9 (63.9-73.4)	71.0 (64.0-76.0)	70.0 (64.0-75.0)
<70	88 (43.4)	47 (65.3)	30 (46.9)	23 (35.9)	415 (54.8)	395 (42.9)	998 (48.0)
≥70	115 (56.6)	25 (34.7)	34 (53.1)	41 (64.1)	342 (45.2)	526 (57.1)	1083 (52.0)
Performance status score							
0-1	122 (60.1)	65 (90.3)	39 (60.9)	53 (82.8)	694 (91.7)	801 (87.0)	1774 (85.2)
≥2	80 (39.4)	7 (9.7)	25 (39.1)	11 (17.2)	63 (8.3)	118 (12.8)	304 (14.6)
Missing	1 (0.5)	0	0	0	0	2 (0.2)	3 (0.1)
Serum PSA level, ng/mL							
<143	110 (54.2)	48 (66.7)	36 (56.2)	29 (45.3)	362 (47.8)	433 (47.0)	1018 (48.9)
≥143	86 (42.4)	24 (33.3)	28 (43.8)	35 (54.7)	368 (48.6)	477 (51.8)	1018 (48.9)
Missing	7 (3.4)	0	0	0	27 (3.6)	11 (1.2)	45 (2.2)
Alkaline phosphatase level, U/L							
<248.5	83 (40.9)	44 (61.1)	11 (17.2)	31 (48.4)	341 (45.0)	518 (56.2)	1028 (49.4)
≥248.5	110 (54.2)	28 (38.9)	53 (82.8)	33 (51.6)	401 (53.0)	403 (43.8)	1028 (49.4)
Missing	10 (4.9)	0	0	0	15 (2.0)	0	25 (1.2)
Hemoglobin, g/dL							
<12.4	102 (50.2)	22 (30.6)	26 (40.6)	24 (37.5)	360 (47.6)	498 (54.1)	1032 (49.6)
≥12.4	91 (44.8)	50 (69.4)	38 (59.4)	40 (62.5)	388 (51.2)	423 (45.9)	1030 (49.5)
Missing	10 (4.9)	0	0	0	9 (1.2)	0	19 (0.9)
No. of bone metastases <sup>b</sup>							
≤6	65 (32.0)	15 (20.8)	9 (14.1)	19 (29.7)	NA	138 (15.0)	246 (18.6)
>6	133 (65.5)	57 (79.2)	55 (85.9)	45 (70.3)	NA	779 (84.6)	1069 (80.7)
Missing	5 (2.5)	0	0	0	0	4 (0.4)	9 (0.7)
Duration of follow-up, median (range), mo	62.7 (1.8-62.7)	22.3 (1.0-32.3)	NA (2.6-188.1)	12.1 (0.5-25.6)	39.2 (0.4-75.1)	10.0 (0.4-36.6)	26.7 (0.4-188.1)
No. of deaths	194 (95.6)	41 (56.9)	64 (100)	50 (78.1)	618 (81.6)	528 (57.3)	1495 (71.8)
No. of symptomatic skeletal events	NA	NA	20 (31.3)	33 (51.6)	396 (52.3)	318 (34.5)	767 (42.5)
Spinal cord compression	NA	NA	4 (6.3)	5 (7.8)	58 (7.7)	23 (2.5)	90 (5.0)
Pathologic bone fracture	NA	NA	0	2 (3.1)	25 (3.3)	34 (3.7)	60 (3.4)
Surgical intervention	NA	NA	0	0	1 (0.1)	2 (0.2)	3 (0.2)
External radiotherapy <sup>c</sup>	NA	NA	16 (25.0)	26 (40.6)	312 (41.2)	259 (28.1)	613 (33.9)

Abbreviations: ALSYMPCA, Alpharadin in Symptomatic Prostate Cancer Patients; IQR, interquartile range; NA, not applicable; PSA, prostate-specific antigen; TRAPEZE, Taxane Radioisotope Zoledronic Acid.

SI conversion factors: To convert PSA to micrograms per liter, multiply by 1; to convert alkaline phosphatase to microkatal per liter, multiply by 0.0167; to convert hemoglobin to grams per liter, multiply by 10.

<sup>a</sup> Continuous characteristics were divided into 2 classes using the median.

<sup>b</sup> For the trial by Nilsson et al<sup>28</sup> and the ALSYMPCA trial,<sup>15</sup> superscan was considered as higher than 6 bone metastases. For the TRAPEZE trial,<sup>29</sup> NA indicates that the number of bone metastases at baseline was not collected or available in this trial.

<sup>c</sup> This category contains both external beam radiotherapy and use of radioisotope for the TRAPEZE trial.<sup>29</sup>

effect (FE model: HR, 0.82; 95% CI, 0.73-0.92;  $P < .001$ ; RE model: HR, 0.80; 95% CI, 0.65-0.99;  $P = .04$ ;  $\tau^2 = 0.02$ ) (eFigure 2 in the Supplement).

We observed a significant difference of the overall treatment effect between  $\alpha$ -emitting RI and  $\beta$ -emitting RI groups of trials; a significant OS benefit was observed in the  $\alpha$ -emitting RI trials (FE model: HR, 0.70; 95% CI, 0.58-0.83;  $P$  for heterogeneity = .47; 2 trials;  $n = 985$ ), but no significant benefit was seen in the  $\beta$ -emitting RI trials (FE model: HR, 0.96; 95% CI, 0.84-1.10;  $P$  for heterogeneity = .001; RE model: HR, 0.88; 95% CI, 0.60-1.29;  $\tau^2 = 0.11$ ; 4 trials;  $n = 1096$ ) ( $\chi^2 = 8.24$ ;  $P$  for interaction = .004) (Figure 1A). The absolute OS benefit

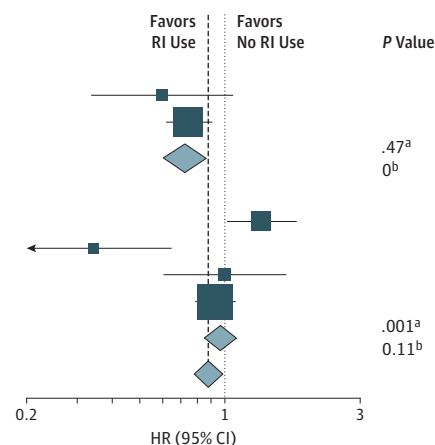
of RI use in the  $\alpha$ -emitter group was 10.4% (95% CI, 3.9-16.9) at 1 year and 9.5% (95% CI, 1.7-17.3) at 2 years (Figure 2B). There was no significant OS benefit of  $\beta$ -emitting RI use at 1 year (absolute difference, 0.0%; 95% CI, -5.6 to 5.6) and 2 years (absolute difference, 0.6%; 95% CI, -4.8 to 6.0) (Figure 2C). A significant difference was also observed by comparator treatment (eFigure 3 in the Supplement). This subset analysis is similar to the previous one when regrouping the 4 trials<sup>25-27,29</sup> comparing RI use in combination or not with chemotherapy or ERT. These 2 subset analyses did not explain the overall between-trial heterogeneity of treatment effect, since significant residual heterogeneity remained (type of radiation:

**Figure 1. Overall Survival and Subgroup Analysis of Trials Comparing Patients Receiving Radioisotopes (RIs) With Patients Receiving No RIs by Type of Radiation**

**A** Overall survival analysis

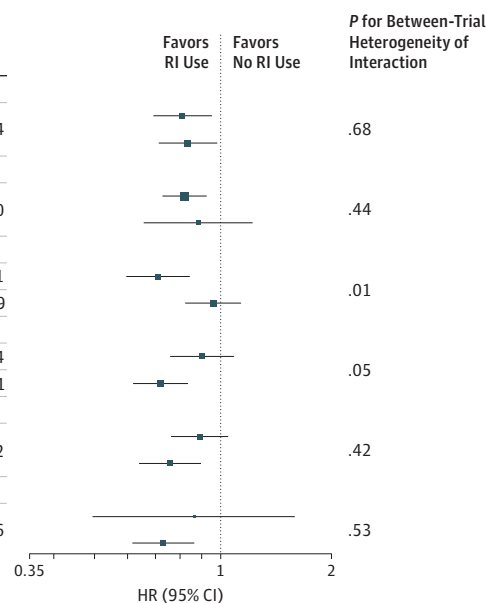
Source	No. of Deaths/No. Entered		O - E	Variance	HR (95% CI)		P Value
	RI	No RI					
<b>α-Emitting RIs</b>							
Nilsson et al, <sup>28</sup> 2007	23/33	27/31	-6.6	11.9	0.57 (0.33-1.01)		
ALSYMPCA <sup>15</sup>	333/614	195/307	-37.6	110.0	0.71 (0.59-0.86)		
Subtotal	356/647	222/338	-44.2	121.9	FE: 0.70 (0.58-0.83) RE: 0.70 (0.58-0.83)		.47 <sup>a</sup> 0 <sup>b</sup>
<b>β-Emitting RIs</b>							
Oosterhof et al, <sup>27</sup> 2003	97/101	97/102	13.7	47.0	1.34 (1.01-1.78)		
Tu et al, <sup>25</sup> 2001	14/36	27/36	-10.4	9.8	0.34 (0.18-0.65)		
Smeland et al, <sup>26</sup> 2003	30/30	34/34	0	15.5	1.00 (0.61-1.64)		
TRAPEZE <sup>29</sup>	308/378	310/379	-12.3	153.1	0.92 (0.79-1.08)		
Subtotal	449/545	468/551	-9.0	225.3	FE: 0.96 (0.84-1.10) RE: 0.88 (0.60-1.29)		.001 <sup>a</sup> 0.11 <sup>b</sup>
Total	805/1192	690/889	-53.2	347.2	0.86 (0.77-0.95)		

Test for heterogeneity:  $\chi^2_5 = 24.46$ ;  $P < .001$ ;  $I^2 = 80\%$   
 Test for interaction:  $\chi^2_1 = 8.24$ ;  $P = .004$   
 Residual heterogeneity:  $\chi^2_4 = 16.22$ ;  $P = .003$   
 RE model: HR, 0.80; 95% CI, 0.61-1.06;  $P = .12$ ;  $\tau^2 = 0.08$   
 RE effect:  $P = .004$



**B** Subgroup analysis of overall survival<sup>c</sup>

Category	No. of Deaths/No. Entered		O - E	Variance	HR (95% CI)	HR (95% CI); P for Interaction	P for Between-Trial Heterogeneity of Interaction
	RI	No RI					
<b>Age, y</b>							
<70	323/497	286/366	-31.3	148.7	0.81 (0.69-0.95)	FE: 1.07 (0.86-1.35); .54	
≥70	371/558	280/385	-27.7	154.5	0.84 (0.71-0.98)		.68
<b>Performance status score</b>							
0-1	594/929	485/658	-51.6	260.8	0.82 (0.73-0.93)		.44
≥2	100/125	80/92	-5.2	42.5	0.89 (0.66-1.20)	FE: 1.10 (0.79-1.52); .60	
<b>Serum PSA level, ng/mL</b>							
<143	273/508	247/352	-42.8	124.2	0.71 (0.59-0.84)	FE: 1.39 (1.10-1.75); .01	.01
≥143	404/524	305/384	-7.2	169.6	0.96 (0.82-1.11)	RE: 1.63 (0.92-2.89); .09	
<b>Alkaline phosphatase level, U/L</b>							
<248.5	296/537	233/364	-12.6	126.0	0.90 (0.76-1.08)	FE: 0.78 (0.62-0.98); .04	.05
≥248.5	390/508	329/382	-57.5	173.8	0.72 (0.62-0.83)	RE: 0.85 (0.53-1.37); .51	
<b>Hemoglobin level, g/dL</b>							
<12.4	398/530	301/378	-19.4	166.2	0.89 (0.76-1.04)		.42
≥12.4	292/519	263/370	-37.3	134.4	0.76 (0.64-0.90)	FE: 0.83 (0.66-1.05); .12	
<b>No. of bone metastases<sup>d</sup></b>							
≤6	35/117	21/49	-1.8	12.5	0.86 (0.50-1.50)		.53
>6	351/557	234/322	-42.8	136.0	0.73 (0.62-0.86)	FE: 0.83 (0.47-1.51); .56	



A, Overall survival in all trials.  $\tau^2$  values were estimated using the DerSimonian and Laird method.<sup>23</sup> Test for heterogeneity:  $\alpha$ -emitting RIs:  $\chi^2_1 = 0.53$ ;  $P = .47$ ;  $I^2 = 0\%$ ;  $\beta$ -emitting RIs:  $\chi^2_3 = 15.67$ ;  $P < .001$ ;  $I^2 = 81\%$ . B, Subgroup analysis of OS. ALSYMPCA indicates Alpharadin in Symptomatic Prostate Cancer Patients; FE, fixed-effects model; HR, hazard ratio; O - E, observed minus expected number of deaths in the experimental arm; PSA, prostate-specific antigen; RE, random-effects model; and RI, radioisotope. To convert PSA to micrograms per liter, multiply by 1; to convert alkaline phosphatase to microkatal per liter, multiply by 0.0167; to convert hemoglobin to grams per liter, multiply by 10.

<sup>a</sup> P value corresponds to the test for between-trial heterogeneity.

<sup>b</sup>  $\tau^2$ .

<sup>c</sup> The trials by Tu et al<sup>25</sup> and Oosterhof et al<sup>27</sup> were excluded because they were considered outliers.

<sup>d</sup> Data from the Taxane Radioisotope Zoledronic Acid (TRAPEZE) trial<sup>29</sup> were not included in the subgroup analysis of bone metastases at baseline because this information was not available.

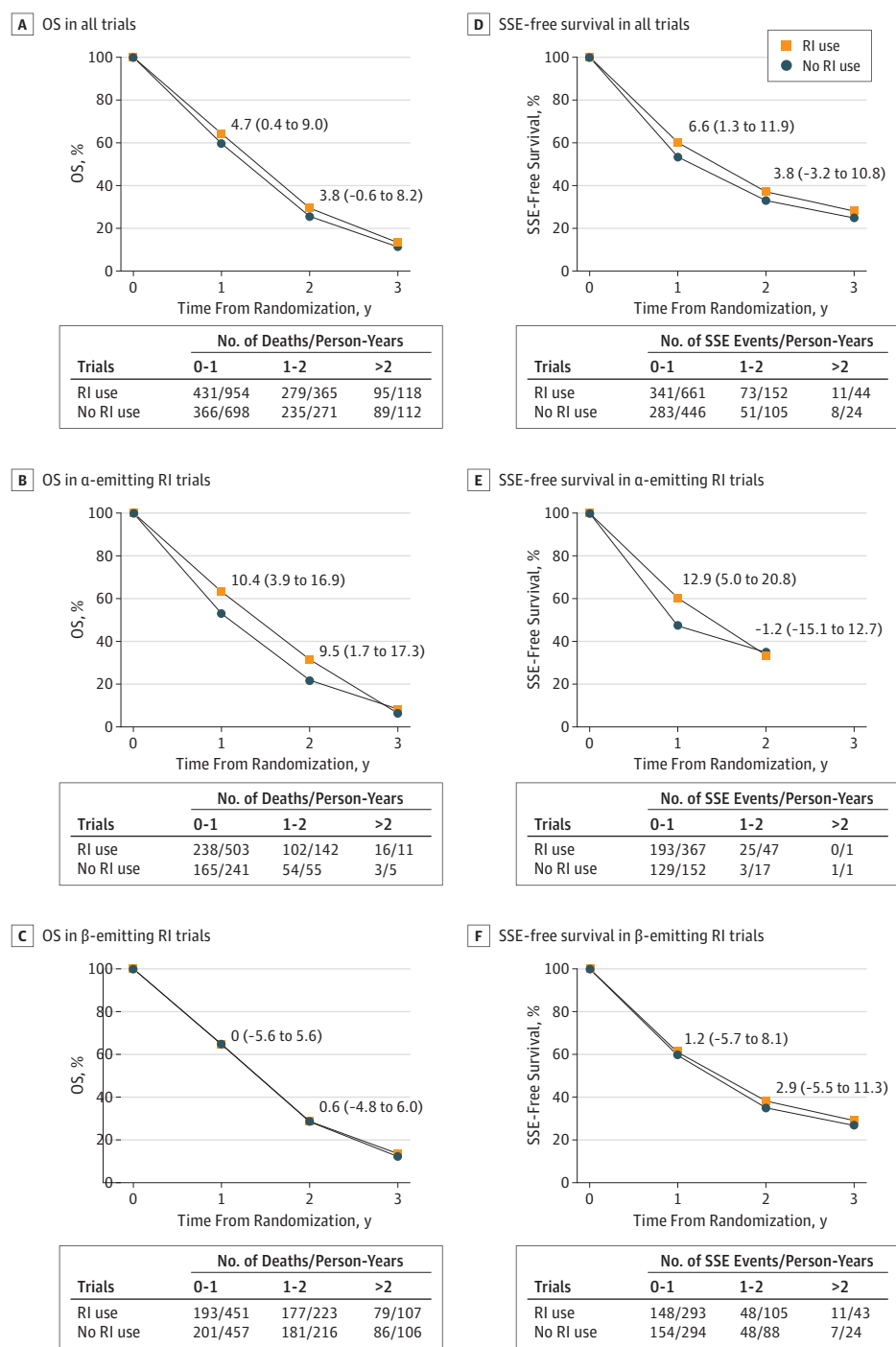
$\chi^2_4 = 16.22$ ;  $P = .003$ ; type of comparison:  $\chi^2_2 = 9.39$ ;  $P = .009$ . When excluding the trials by Tu et al<sup>25</sup> and Oosterhof et al,<sup>27</sup> the type of RI explained the observed heterogeneity between trials, since the residual heterogeneity was close to 0 with an HR of 0.93 (95% CI, 0.80-1.08) for  $\beta$ -emitting RIs, which remained nonsignificant (eFigure 2 in the Supplement). The

difference in type of emitter may be confounded by the timing of the interventions (before vs after Docetaxel era) and the type of control arm.

Planned subgroup analyses (Figure 1B) excluding the trials by Tu et al<sup>25</sup> and Oosterhof et al<sup>27</sup> showed a significant interaction between treatment effect and serum PSA level (HR, 1.39;



**Figure 2. Stratified Survival Curves for Overall Survival (OS) and Symptomatic Skeletal Event (SSE)-Free Survival<sup>a</sup>**



The absolute differences (95% CIs) at 1 and 2 years are given. RI indicates radioisotope.

<sup>a</sup> The absolute difference at more than 2 years is not reported because of timing lack of precision.

95% CI, 1.10-1.75; *P* for interaction = .01) and between treatment effect and ALP level (HR, 0.78; 95% CI, 0.62-0.98; *P* for interaction = .04) but with heterogeneity of trial interactions. When an RE model was used, only the interaction between treatment and serum PSA level remained statistically significant at 10% (HR of interaction, 1.63; 95% CI, 0.92-2.89; *P* = .09) (eMethods 2 in the Supplement); patients with a lower

serum PSA level (less than 143 ng/mL [to convert to micrograms per liter, multiply by 1]) (FE model: HR, 0.71; 95% CI, 0.59-0.84) had a better benefit of RI use compared with patients with a higher serum PSA level (FE model: HR, 0.96; 95% CI, 0.82-1.11) (eFigure 4 in the Supplement). After excluding the trial by Nilsson et al<sup>28</sup> because of between-trial heterogeneity within a class (eFigure 4 in the Supplement), this inter-

action remained statistically significant (HR of interaction, 1.29; 95% CI, 1.02-1.64;  $P = .03$ ) with no between-trial heterogeneity and homogeneous overall treatment effect in each class. No significant interaction between treatment effect and other patients' characteristics was observed (Figure 1B), including the unplanned analysis of ALP level with the cutoff of 120 U/L (data not shown; to convert to microkatal per liter, multiply by 0.0167).

For SSE-free survival, data were available from 4 trials<sup>15,26,28,29</sup> including 1806 patients, with 767 SSEs (90 SCCs, 61 pathologic bone fractures, 3 surgical interventions, and 613 ERTs). No information was collected for the Tu et al.<sup>25</sup> The trial by Oosterhof et al<sup>27</sup> was also excluded from this analysis since SSEs were not collected systematically. In the trial by Smeland et al,<sup>26</sup> only SCC and ERT data were collected. In contrast with the trial by Nilsson et al<sup>28</sup> and the ALSYMPCA trial,<sup>15</sup> the TRAPEZE trial<sup>29</sup> did not distinguish between ERT and the reuse of RI, and thus these men (111 of 314 [35.4%]) were considered in only 1 category. Compared with no RI use, RI use had a significant benefit on SSE-free survival (FE model: HR, 0.81; 95% CI, 0.69-0.93;  $P = .004$ ) (between-trial heterogeneity:  $\chi^2_3 = 6.71$ ;  $P = .08$ ;  $I^2 = 55\%$ ) (Figure 3A), which disappeared with an RE model (HR, 0.76; 95% CI, 0.58-1.01;  $P = .06$ ;  $\tau^2 = 0.04$ ). The absolute SSE-free survival difference was 6.6% (95% CI, 1.3-11.9) at 1 year and 3.8% (95% CI, -3.2 to 10.8) at 2 years (Figure 2D).

The interaction between emitter type and treatment effect on SSE-free survival was significant ( $\chi^2_1 = 5.26$ ;  $P = .02$ ) with no significant residual heterogeneity ( $\chi^2_2 = 1.45$ ;  $P = .48$ ) (Figure 3A). The risk reduction of SSE was restricted to the  $\alpha$ -emitting RI trials (FE model: HR, 0.65; 95% CI, 0.52-0.82;  $P$  for heterogeneity = .67; 2 trials;  $n = 985$ ). In terms of SSE-free rates, the differences were 12.9% (95% CI, 5.0-20.8) at 1 year and -1.2% (95% CI, -15.1 to 12.7) at 2 years (Figure 2E). Use of  $\beta$ -emitting RIs was not significantly associated with SSE-free survival (FE model: HR, 0.93; 95% CI, 0.77-1.13;  $P$  for heterogeneity = .26; 2 trials;  $n = 821$ ), with absolute differences of 1.2% (95% CI, -5.7 to 8.1) at 1 year and 2.9% (95% CI, -5.5 to 11.3) at 2 years (Figure 2F). A significant interaction between the type of comparison and the treatment effect was observed ( $\chi^2_2 = 6.54$ ;  $P = .04$ ) (eFigure 5 in the Supplement).

Planned subgroup analyses for SSE-free survival (Figure 3B) showed a significant interaction between treatment effect and serum PSA level (HR of interaction, 1.33; 95% CI, 1.00-1.79;  $P = .05$ ), which disappeared after taking into account significant heterogeneity ( $\chi^2_3 = 8.12$ ;  $P = .04$ ) by an RE model (HR, 1.51; 95% CI, 0.81-2.82;  $P = .19$ ), and a significant interaction between treatment effect and ALP level (HR of interaction, 1.34; 95% CI, 1.00-1.80;  $P = .05$ ), with no between-trial heterogeneity of interaction ( $\chi^2_3 = 4.80$ ;  $P = .19$ ); patients with a lower ALP level (HR, 0.69; 95% CI, 0.56-0.85) had a better benefit when using RIs compared with patients with a higher ALP level (HR, 0.94; 95% CI, 0.77-1.16) (eFigure 6A in the Supplement). This interaction remained significant ( $\chi^2_1 = 2.99$ ;  $P = .08$ ), with homogeneous treatment effect in each class after excluding the trials by Smeland et al<sup>26</sup> and Nilsson et al,<sup>28</sup> 2 trials with large interaction effects (eFigure 6B in the Supplement). No significant interaction between treatment effect and patients' other

characteristics was observed (Figure 3B), including the unplanned analysis of ALP level using the cutoff of 120 U/L (data not shown). As suggested by a reviewer, we performed an unplanned sensitivity analysis including only patients not treated with zoledronic acid from the TRAPEZE trial<sup>29</sup> in the meta-analysis (eMethods 3 in the Supplement).

### Adverse Events

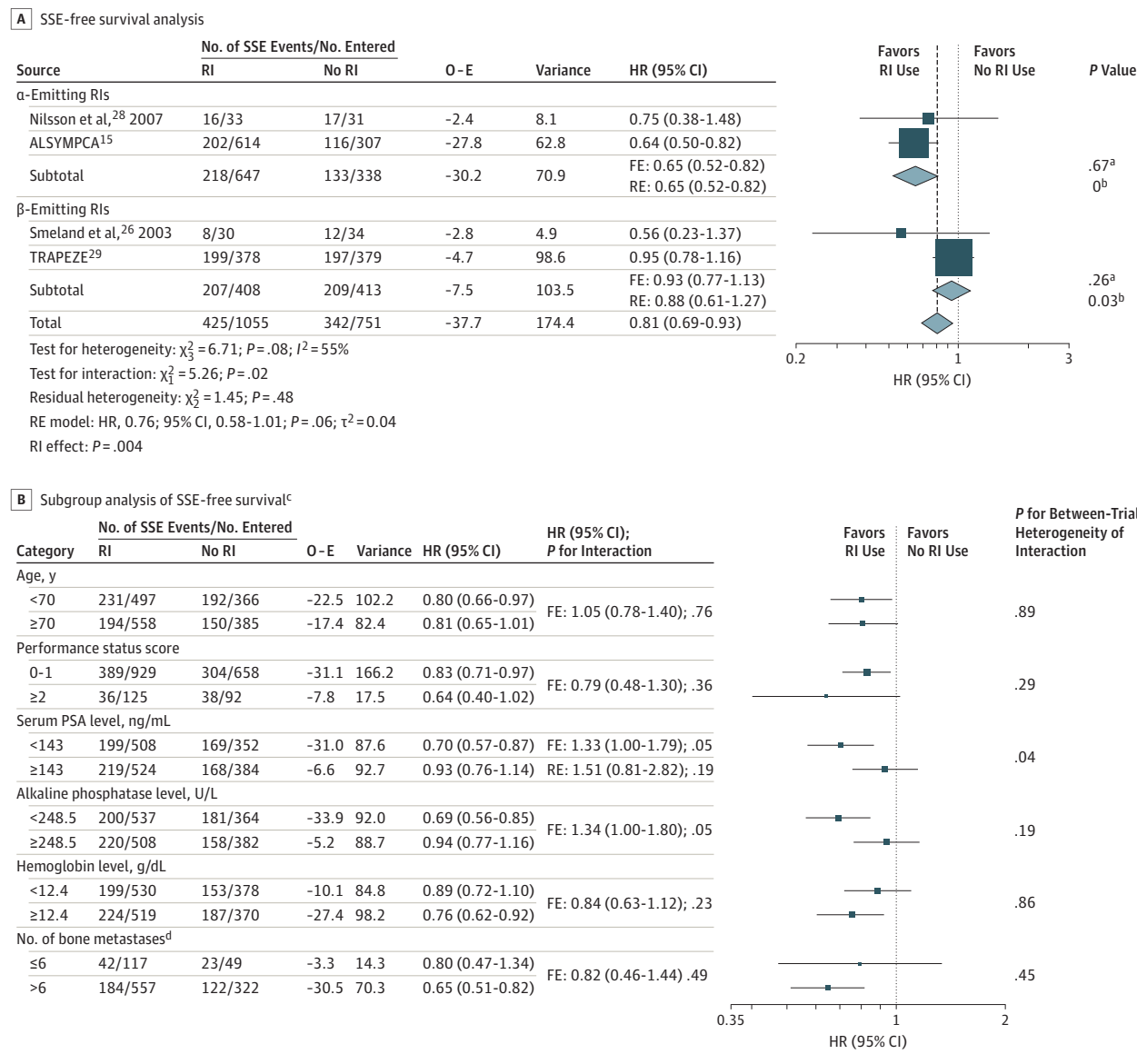
The rate of severe hematological toxic effects increased with the use of RI (20.5%) compared with no RI use (15.9%) (OR, 1.48; 95% CI, 1.17-1.88;  $P = .001$ ) (Table 2) (eTable 6 and eFigure 7A in the Supplement). Hematological toxic effects between the  $\alpha$ -emitting RI group (OR, 1.77; 95% CI, 1.24-2.54) and the  $\beta$ -emitting RI group (OR, 1.29; 95% CI, 0.94-1.77) (eFigure 7B in the Supplement) was not significantly different ( $P$  for interaction = .19) (unplanned analysis). The rate of nausea and/or vomiting was not significantly different between the RI use and no RI use arms (OR, 1.27; 95% CI, 0.74-2.17;  $P = .39$ ) (eFigure 8 in the Supplement), nor was the rate of febrile neutropenia (OR, 1.00; 95% CI, 0.59-1.68;  $P = .99$ ) (eFigure 9A in the Supplement). The unplanned analysis of febrile neutropenia rates according to the type of radiation emitted revealed no significant difference between the RI effect in the  $\alpha$ -emitter group (OR, 0.60; 95% CI, 0.06-6.36) and in the  $\beta$ -emitter group (OR, 1.02; 95% CI, 0.60-1.75) ( $P$  for interaction = .67), with only 2 events observed in the  $\alpha$ -emitting RI group (eFigure 9B in the Supplement).

## Discussion

Bone is the main target of prostate cancer dissemination and a source of major morbidity and mortality.<sup>30,31</sup> The present meta-analysis based on IPD from randomized clinical trials shows that RI does not improve OS in men with CRPC and bone metastases. However, an OS benefit was observed with the <sup>223</sup>Ra  $\alpha$ -emitting RI, while no significant benefit was observed with the Sr89  $\beta$ -emitting RI. In the subgroup analyses, men with the lowest serum PSA values appeared to benefit significantly more from bone-targeted RI therapy compared with those with the highest serum PSA values. No significant interaction was found between treatment effect and age, performance status score, ALP level, hemoglobin level, and the number of bone metastases at baseline. Furthermore, similar results were observed for SSE-free survival except when excluding patients treated with zoledronic acid in the TRAPEZE trial,<sup>29</sup> where we observed a significant overall benefit of RI use both in the FE and RE models (eMethods 3 in the Supplement). An overall risk reduction of SSE-free survival was more important in patients with low ALP levels compared with patients with high ALP levels. Hematological toxic effects were more frequently observed in patients treated by RI compared with those treated without RI, with no significant differences according to the type of radiation.

In the recently reported interim analysis of the Eastern Cooperative Oncology Group (ERA 223) study<sup>32</sup> including 401 and 405 patients in the <sup>223</sup>Ra with abiraterone acetate and placebo with abiraterone acetate arms, respectively, concurrent

**Figure 3. Symptomatic Skeletal Event (SSE)-Free Survival and Subgroup Analyses of Trials Comparing Patients Receiving Radioisotopes (RIs) With Patients Receiving No RIs by Type of Radiation**



A, Symptomatic skeletal event-free survival excluding 2 trials.<sup>25,27</sup>  $\tau^2$  values were estimated using the DerSimonian and Laird method.<sup>23</sup> Test for heterogeneity:  $\alpha$ -emitting RIs:  $\chi^2_1 = 0.18$ ;  $P = .67$ ;  $I^2 = 0\%$ ;  $\beta$ -emitting RIs:  $\chi^2_1 = 1.28$ ;  $P = .26$ ;  $I^2 = 22\%$ . B, Subgroup analysis of SSE-free survival. ALSYMPCA indicates Alpharadin in Symptomatic Prostate Cancer Patients; FE, fixed-effects model; HR, hazard ratio; O - E, observed minus expected number of SSEs in the experimental arm; PSA, prostate-specific antigen; RE, random-effects model; and RI, radioisotope. To convert PSA to micrograms per liter, multiply by 1; to convert alkaline phosphatase to microkatal per liter, multiply by 0.0167; to convert hemoglobin to grams per liter, multiply by 10.

<sup>a</sup> P value corresponds to the test for between-trial heterogeneity.

<sup>b</sup>  $\tau^2$ .

<sup>c</sup> The trials by Tu et al<sup>25</sup> and Oosterhof et al<sup>27</sup> were excluded because no information was available for the former and data were not reliable for the latter.

<sup>d</sup> Data from the Taxane Radioisotope Zoledronic Acid (TRAPEZE) trial<sup>29</sup> were not included in the subgroup analysis of bone metastases at baseline because this information was not requested in this trial.

treatment with <sup>223</sup>Ra and abiraterone acetate did not improve SSE-free survival (HR, 1.12; 95% CI, 0.92-1.37) and OS (HR, 1.21; 95% CI, 0.95-1.51). These results differ from the ALSYMPCA trial.<sup>15</sup> One of the explanations of the failure of <sup>223</sup>Ra when it is associated with abiraterone is probably owing to the biological activities of both drugs. In fact, we know that abiraterone acetate promotes the osteoblastic activity in

the bone and that <sup>223</sup>Ra is the most active in the bone remodeling sites. Likely, this makes the <sup>223</sup>Ra harmful by targeting not only metastatic bones but also disease-free bones. As this trial was not included in our study because the recruitment was more recent, an unplanned post hoc analysis including ERA 223 trial<sup>32</sup> data based on summary data was carried out for OS but not for SSE-free survival, since death was considered as



Table 2. Toxic Effects Analyses, Including Hematological Toxic Effects, Nausea and/or Vomiting, and Febrile Neutropenia<sup>a</sup>

Toxic Effect	No. of Trials	No. of Patients	Proportion of Patients With Toxic Effects Receiving RI, %	Proportion of Patients With Toxic Effects Receiving No RI, No./Total No. (%)	Odds Ratio (95% CI)	P Value	I <sup>2</sup> , %	P for Heterogeneity
Hematological <sup>b</sup>	6	2029	20.5	138/867 (15.9)	1.48 (1.17-1.88)	.001	0	.67
Nausea and/or vomiting <sup>c</sup>	4	1061	5.9	26/527 (4.9)	1.27 (0.74-2.17)	.39	0	.44
Nausea and/or vomiting (sensitivity analysis) <sup>d</sup>	3	989	5.4	20/491 (4.1)	1.51 (0.84-2.71)	.17	0	.81
Febrile neutropenia <sup>e</sup>	5	1878	3.7	29/787 (3.7)	1.00 (0.59-1.68)	.99	0	.87

<sup>a</sup> See eTable 6 in the Supplement for a detailed description of selected toxic effects and eFigure 7 in the Supplement for the forest plots.

<sup>b</sup> All trials were used for hematological toxic effects analysis.

<sup>c</sup> The analysis of nausea and/or vomiting was limited to 4 trials because 2 trials (Nilsson et al<sup>28</sup> and the ALSYMPCA trial<sup>29</sup>) had a large amount of missing data (>20%).

<sup>d</sup> Sensitivity analysis excluded the trial by Tu et al,<sup>25</sup> as nausea and/or vomiting was extracted from the publication, which reported grade of 2 or greater. Here, we focused on toxic effects of grade 3 or greater.

<sup>e</sup> The trial by Oosterhof et al<sup>27</sup> was excluded because these data were not collected.

an event in the ERA 223 trial, contrary to our meta-analysis (eMethods 4 in the Supplement).

Furthermore, the use of the  $\beta$ -emitting RI Sr89 was not significantly associated with OS both when used alone and in combination, which is consistent with earlier reported data.<sup>10,29</sup> Only 1 study using a  $\beta$ -emitting RI, the trial by Tu et al,<sup>25</sup> reported OS and SSE-free survival improvements. In this trial, Sr89 was used as a maintenance strategy in men selected for having a chemosensitive cancer. No improvement in time to SSE was observed with  $\beta$ -emitting RIs. Most likely, physical and biological properties explain the superiority of  $\alpha$ -emitting RIs over  $\beta$ -emitting RIs in men with CRPC.<sup>33</sup>

### Strengths and Limitations

The main strength of this meta-analysis is the use of IPD, which allowed detailed checking of each trial that was subsequently reanalyzed and validated by the trialists. The intention-to-treat principle was respected for all analyses, and subgroup analyses have been performed through the estimation of interaction terms.

This meta-analysis has limitations. First, data from 3 randomized clinical trials could not be retrieved, and therefore, this meta-analysis was limited to 6 randomized clinical trials, with 2 major trials (the ALSYMPCA and TRAPEZE trials<sup>15,29</sup>) providing more than 80% of data. This first limit has no effect on the main findings (eMethods 5 in the Supplement). When using an RE approach, used in particular in case of between-trial heterogeneity, the relative weight of the ALSYMPCA and TRAPEZE trials compared with an FE approach was 21.8% and 22.5% instead of 30.9% and 44.8%, respectively. Second, substantial and moderate heterogeneity was observed between trials for OS and SSE-free survival analyses, respectively, leading to a nonsignificant effect when using an RE model. For OS, this between-trial heterogeneity is mainly explained by 2 outliers (with I<sup>2</sup> decreasing from 80% to 54%) and by the type of emitted radiations. The 2 outliers correspond to (1) the large treatment effect reported in the trial by Tu et al,<sup>25</sup> which may be explained by the selected population—men with a cancer re-

sponse or stabilization after induction chemotherapy—and (2) the significant negative effect of Sr89 compared with pain treatment with local field radiotherapy reported in the trial by Oosterhof et al,<sup>27</sup> which was difficult to explain by the authors. One hypothesis is that Sr89 was given to patients with more impaired global health. When excluding these 2 trials, a similar and significant treatment effect was observed both for the FE and RE models. For SSE-free survival, for which the analysis is limited to 4 trials only, since the 2 trials had no available information, the moderate trial heterogeneity is related to the type of emitted radiations. The methods of DerSimonian and Laird that we used for the estimation of the between-trial variability with the RE model are criticized by some authors.<sup>34</sup> Its estimation by a restricted maximum likelihood method gives similar results in this meta-analysis except for the main analysis ( $\tau^2$  value: restricted maximum likelihood, 0.14; DerSimonian and Laird, 0.08). The residual heterogeneity may be explained by patient characteristics. The trials' accrual period, which ranged from 1993 to 2013, might have added heterogeneity in the results. The subset analysis by type of comparison is limited owing to the number of trials and is reduced to the subset analysis by type of emitted radiation when excluding the 2 outliers. A further limitation concerns the quality of data collected for the SSE-free survival analysis and the lack of power for the subset analyses of toxic effects.

### Conclusions

This meta-analysis supports the role of  $\alpha$ -emitting RIs (<sup>223</sup>Ra) as a treatment for men with CRPC and bone metastases both for OS and the prevention of SSEs but not of  $\beta$ -emitting RIs (Sr89). The action of  $\alpha$ -emitting RIs may be explained by their physical properties irrespective of the study design. However, these results must be interpreted with caution because of the observed between-trial heterogeneity. Furthermore, dedicated studies are needed to identify biomarkers of response to <sup>223</sup>Ra and to define the best and safest combinations.

#### ARTICLE INFORMATION

Accepted for Publication: July 18, 2019.

Published Online: December 12, 2019.  
doi:10.1001/jamaoncol.2019.4097

Author Affiliations: Department of Cancer Medicine, Institut Gustave Roussy, Villejuif, France (Terrisse, Fizazi); Université Paris Sud, Orsay, France

(Terrisse, Karamouza, Pignon, Fizazi, Le Teuff); INSERM U1015, Université Paris Sud, Orsay, France (Terrisse); Ligue Nationale Contre le Cancer Meta-Analysis Platform, Biostatistics and Epidemiology Unit, Institut Gustave Roussy, Villejuif, France (Karamouza, Pignon, Le Teuff); The Royal Marsden NHS Foundation Trust, London, United Kingdom (Parker); Institute of Cancer Research, Sutton, United Kingdom (Parker); Tulane University School of Medicine, New Orleans, Louisiana (Sartor); Institute of Cancer and Genomic Sciences, University Hospitals Birmingham, Birmingham, United Kingdom (James, Pirrie); European Organisation for Research and Treatment of Cancer Headquarters, Brussels, Belgium (Collette); Cliniques Universitaires Saint Luc, Brussels, Belgium (Tombal); The University of Texas MD Anderson Cancer Center, Houston (Chahoud); Division of Cancer Medicine, Oslo University Hospital, University of Oslo, Oslo, Norway (Smeland, Erikstein); CESP, Faculté de médecine, Université Paris Sud, Faculté de médecine, INSERM U1018, Université Paris Saclay, Villejuif, France (Pignon, Le Teuff).

**Author Contributions:** Drs Terrisse and Le Teuff had full access to all of the data in the study and take responsibility for the integrity of the data and the accuracy of the data analysis.

**Study concept and design:** Terrisse, Karamouza, Parker, Sartor, Tombal, Smeland, Pignon, Fizazi, Le Teuff.

**Acquisition, analysis, or interpretation of data:** Terrisse, Karamouza, James, Pirrie, Collette, Chahoud, Smeland, Erikstein, Pignon, Fizazi, Le Teuff.

**Drafting of the manuscript:** Terrisse, Karamouza, Smeland, Fizazi, Le Teuff.

**Critical revision of the manuscript for important intellectual content:** Terrisse, Parker, Sartor, James, Pirrie, Collette, Tombal, Chahoud, Smeland, Erikstein, Pignon, Fizazi, Le Teuff.

**Statistical analysis:** Karamouza, Pirrie, Collette, Le Teuff.

**Obtained funding:** Terrisse, Smeland, Pignon, Fizazi, Le Teuff.

**Administrative, technical, or material support:** Terrisse, Pirrie, Smeland, Erikstein, Pignon, Fizazi, Le Teuff.

**Study supervision:** Terrisse, Sartor, Tombal, Pignon, Fizazi, Le Teuff.

**Conflict of Interest Disclosures:** Dr Parker has received grants from Bayer as well as personal fees from Advanced Accelerator Applications, Bayer, and Janssen Pharmaceutica outside the submitted work. Dr Sartor has received grants, personal fees, and nonfinancial support from Bayer, Endocyte, and Advanced Accelerator Applications; personal fees from Fusion Pharmaceuticals; and nonfinancial support from Novartis during the conduct of the study; and grants from AstraZeneca and Johnson & Johnson; personal fees from Blue Earth Diagnostics, AstraZeneca, Johnson & Johnson, and Pfizer; and nonfinancial support from Johnson & Johnson and Pfizer outside the submitted work. Dr James has received grants and personal fees from Bayer during the conduct of the study as well as grants from Janssen Pharmaceutica, Astellas Pharma, and Sanofi and personal fees from Janssen Pharmaceutica, Astellas Pharma, AstraZeneca, Ferring Pharmaceuticals, Clovis Oncology, and Sanofi outside the submitted work. Dr Tombal has received grants, personal fees, and nonfinancial support from Bayer and Amgen during the conduct

of the study as well as grants from Ferring Pharmaceuticals and personal fees from Astellas Pharma, Ferring Pharmaceuticals, Janssen Pharmaceutica, and Sanofi outside the submitted work. Dr Smeland has received nonfinancial support from Amersham during the conduct of the study. Dr Pignon has received grants from Bayer during the conduct of the study. Dr Fizazi has received personal fees from Bayer during the conduct of the study as well as personal fees from Astellas Pharma, Janssen Pharmaceutica, Sanofi, Orion, CureVac, and Merck Sharpe & Dohme outside the submitted work. No other disclosures were reported.

**Funding/Support:** This study was funded by Bayer and Ligue Nationale Contre le Cancer.

**Role of the Funder/Sponsor:** The funders had no role in the design and conduct of the study; collection, management, analysis, and interpretation of the data; preparation, review, or approval of the manuscript; and decision to submit the manuscript for publication.

**Group Information:** The MORPHEP Collaborative Group members include the following: **Secretariat:** Karim Fizazi, MD, PhD (Department of Cancer Medicine, Institut Gustave Roussy, Villejuif, France); Jean-Pierre Pignon, MD, PhD (Ligue Nationale Contre le Cancer Meta-Analysis Platform, Biostatistics and Epidemiology Unit, Institut Gustave Roussy, Villejuif, France); Safae Terrisse, MD (Department of Cancer Medicine, Institut Gustave Roussy); Sophie Leboulloux, MD (Department of Nuclear Medicine, Institut Gustave Roussy, Villejuif, France); and Gwénaél Le Teuff, PhD (Ligue Nationale Contre le Cancer Meta-Analysis Platform, Biostatistics and Epidemiology Unit, Institut Gustave Roussy); **Steering Committee:** Stéphane Culine, MD, PhD (Department of Medical Oncology, Hôpital Saint-Louis, Paris Diderot University, Paris, France); Gerald Bonardel, MD, PhD (Department of Nuclear Medicine, Val-de-Grâce Hospital, Paris, France); and Laurence Collette, PhD (European Organisation for Research and Treatment of Cancer Headquarters, Brussels, Belgium); **Investigators:** Jad Chahoud, MD (The University of Texas MD Anderson Cancer Center, Houston); Laurence Collette, PhD, MSc (European Organisation for Research and Treatment of Cancer Headquarters); Bjørn Erikstein, MD, PhD (Division of Cancer Medicine, Oslo University Hospital, University of Oslo, Oslo, Norway); Karim Fizazi, MD, PhD (Department of Cancer Medicine, Institut Gustave Roussy); Sophie D. Fossa, MD (National Advisory Unit on Late Effects After Cancer Treatment, Oslo University Hospital, Oslo, Norway); Gaëlle Isaac, MSc (European Organisation for Research and Treatment of Cancer Headquarters); Nicholas D. James, MD (Institute of Cancer and Genomic Sciences, University Hospitals Birmingham, Birmingham, United Kingdom); Eleni Karamouza, MSc (Ligue Nationale Contre le Cancer Meta-Analysis Platform, Biostatistics and Epidemiology Unit, Institut Gustave Roussy); Gwénaél Le Teuff, PhD (Ligue Nationale Contre le Cancer Meta-Analysis Platform, Biostatistics and Epidemiology Unit, Institut Gustave Roussy); Chris C. Parker, MD (The Royal Marsden NHS Foundation Trust, London, United Kingdom); Cherie A. Perez, PhD (The University of Texas MD Anderson Cancer Center); Jean-Pierre Pignon, MD, PhD (Ligue Nationale Contre le Cancer Meta-Analysis Platform, Biostatistics and Epidemiology Unit, Institut

Gustave Roussy); Sarah Pirrie, MSc (Institute of Cancer and Genomic Sciences, University Hospitals Birmingham); A. Oliver Sartor, MD (Tulane University School of Medicine, New Orleans, Louisiana); Sigbjørn Smeland, MD (Division of Cancer Medicine, Oslo University Hospital, University of Oslo); Clive Stubbs, PhD (Institute of Cancer and Genomic Sciences, University Hospitals Birmingham); Safae Terrisse, MD (Department of Cancer Medicine, Institut Gustave Roussy); Shi-Ming Tu, MD (The University of Texas MD Anderson Cancer Center); Bertrand F. Tombal, MD (Cliniques Universitaires Saint Luc, Brussels, Belgium); and Lei Xu, PhD (Bayer HealthCare Pharmaceuticals, Global Medical Affairs Oncology, Whippany, New Jersey).

**Additional Contributions:** We gratefully acknowledge financial support and help to provide data from Bayer. We thank the 2 anonymous referees for their comments and suggestions, which helped to improve the manuscript.

**Additional Information:** The decision to submit the article for publication was made by the Meta-analysis of Bone-Targeting Radiopharmaceutical Therapy in Patients With Bone Metastases From Prostate Cancer Collaborative Group.

## REFERENCES

1. Ferlay J, Colombet M, Soerjomataram I, et al. Cancer incidence and mortality patterns in Europe: estimates for 40 countries and 25 major cancers in 2018. *Eur J Cancer*. 2018;103:356-387. doi:10.1016/j.ejca.2018.07.005
2. Fizazi K, Massard C, Smith M, et al. Bone-related parameters are the main prognostic factors for overall survival in men with bone metastases from castration-resistant prostate cancer. *Eur Urol*. 2015; 68(1):42-50. doi:10.1016/j.eururo.2014.10.001
3. Tannock IF, de Wit R, Berry WR, et al; TAX 327 Investigators. Docetaxel plus prednisone or mitoxantrone plus prednisone for advanced prostate cancer. *N Engl J Med*. 2004;351(15):1502-1512. doi:10.1056/NEJMoa040720
4. de Bono JS, Logothetis CJ, Molina A, et al; COU-AA-301 Investigators. Abiraterone and increased survival in metastatic prostate cancer. *N Engl J Med*. 2011;364(21):1995-2005. doi:10.1056/NEJMoa1014618
5. Scher HI, Fizazi K, Saad F, et al; AFFIRM Investigators. Increased survival with enzalutamide in prostate cancer after chemotherapy. *N Engl J Med*. 2012;367(13):1187-1197. doi:10.1056/NEJMoa1207506
6. de Bono JS, Oudard S, Ozguroglu M, et al; TROPIC Investigators. Prednisone plus cabazitaxel or mitoxantrone for metastatic castration-resistant prostate cancer progressing after docetaxel treatment: a randomised open-label trial. *Lancet*. 2010;376(9747):1147-1154. doi:10.1016/S0140-6736(10)61389-X
7. Kantoff PW, Higano CS, Shore ND, et al; IMPACT Study Investigators. Sipuleucel-T immunotherapy for castration-resistant prostate cancer. *N Engl J Med*. 2010;363(5):411-422. doi:10.1056/NEJMoa1001294
8. Saad F, Gleason DM, Murray R, et al; Zoledronic Acid Prostate Cancer Study Group. A randomized, placebo-controlled trial of zoledronic acid in patients with hormone-refractory metastatic prostate carcinoma. *J Natl Cancer Inst*. 2002;94(19):1458-1468. doi:10.1093/jnci/94.19.1458

9. Fizazi K, Carducci M, Smith M, et al. Denosumab versus zoledronic acid for treatment of bone metastases in men with castration-resistant prostate cancer: a randomised, double-blind study. *Lancet*. 2011;377(9768):813-822. doi:10.1016/S0140-6736(10)62344-6
10. Lewington VJ, McEwan AJ, Ackery DM, et al. A prospective, randomised double-blind crossover study to examine the efficacy of strontium-89 in pain palliation in patients with advanced prostate cancer metastatic to bone. *Eur J Cancer*. 1991;27(8):954-958. doi:10.1016/0277-5379(91)90257-E
11. Serafini AN, Houston SJ, Resche I, et al. Palliation of pain associated with metastatic bone cancer using samarium-153 lexidronam: a double-blind placebo-controlled clinical trial. *J Clin Oncol*. 1998;16(4):1574-1581. doi:10.1200/JCO.1998.16.4.1574
12. Fizazi K, Beuzeboc P, Lumbroso J, et al. Phase II trial of consolidation docetaxel and samarium-153 in patients with bone metastases from castration-resistant prostate cancer. *J Clin Oncol*. 2009;27(15):2429-2435. doi:10.1200/JCO.2008.18.9811
13. Smith MR, Coleman RE, Klotz L, et al. Denosumab for the prevention of skeletal complications in metastatic castration-resistant prostate cancer: comparison of skeletal-related events and symptomatic skeletal events. *Ann Oncol*. 2015;26(2):368-374. doi:10.1093/annonc/mdl519
14. Gillesen S, Attard G, Beer TM, et al. Management of patients with advanced prostate cancer: the report of the Advanced Prostate Cancer Consensus Conference APCCC 2017. *Eur Urol*. 2018;73(2):178-211. doi:10.1016/j.eururo.2017.06.002
15. Parker C, Nilsson S, Heinrich D, et al; ALSYMPCA Investigators. Alpha emitter radium-223 and survival in metastatic prostate cancer. *N Engl J Med*. 2013;369(3):213-223. doi:10.1056/NEJMoa1213755
16. Pignon JP, Hill C. Meta-analyses of randomised clinical trials in oncology. *Lancet Oncol*. 2001;2(8):475-482. doi:10.1016/S1470-2045(01)00453-3
17. Stewart LA, Clarke MJ; Cochrane Working Group. Practical methodology of meta-analyses (overviews) using updated individual patient data. *Stat Med*. 1995;14(19):2057-2079. doi:10.1002/sim.4780141902
18. Schemper M, Smith TL. A note on quantifying follow-up in studies of failure time. *Control Clin Trials*. 1996;17(4):343-346. doi:10.1016/0197-2456(96)00075-X
19. Yusuf S, Peto R, Lewis J, Collins R, Sleight P. Beta blockade during and after myocardial infarction: an overview of the randomized trials. *Prog Cardiovasc Dis*. 1985;27(5):335-371. doi:10.1016/S0033-0620(85)80003-7
20. Lueza B, Rotolo F, Bonastre J, Pignon J-P, Michiels S. Bias and precision of methods for estimating the difference in restricted mean survival time from an individual patient data meta-analysis. *BMC Med Res Methodol*. 2016;16:37. doi:10.1186/s12874-016-0137-z
21. Non-small Cell Lung Cancer Collaborative Group. Chemotherapy in non-small cell lung cancer: a meta-analysis using updated data on individual patients from 52 randomised clinical trials. *BMJ*. 1995;311(7010):899-909. doi:10.1136/bmj.311.7010.899
22. Fisher DJ, Copas AJ, Tierney JF, Parmar MKB. A critical review of methods for the assessment of patient-level interactions in individual participant data meta-analysis of randomized trials, and guidance for practitioners. *J Clin Epidemiol*. 2011;64(9):949-967. doi:10.1016/j.jclinepi.2010.11.016
23. Sartor O, Reid RH, Hoskin PJ, et al; Quadramet 424Sm10/11 Study Group. Samarium-153-Lexidronam complex for treatment of painful bone metastases in hormone-refractory prostate cancer. *Urology*. 2004;63(5):940-945. doi:10.1016/j.urology.2004.01.034
24. Han SH, de Klerk JMH, Tan S, et al. The PLACORHEN study: a double-blind, placebo-controlled, randomized radionuclide study with (186)Re-etidronate in hormone-resistant prostate cancer patients with painful bone metastases: Placebo Controlled Rhenium Study. *J Nucl Med*. 2002;43(9):1150-1156.
25. Tu SM, Millikan RE, Mengistu B, et al. Bone-targeted therapy for advanced androgen-independent carcinoma of the prostate: a randomised phase II trial. *Lancet*. 2001;357(9253):336-341. doi:10.1016/S0140-6736(00)03639-4
26. Smeland S, Erikstein B, Aas M, Skovlund E, Hess SL, Fosså SD. Role of strontium-89 as adjuvant to palliative external beam radiotherapy is questionable: results of a double-blind randomized study. *Int J Radiat Oncol Biol Phys*. 2003;56(5):1397-1404. doi:10.1016/S0360-3016(03)00274-8
27. Oosterhof GON, Roberts JT, de Reijke TM, et al. Strontium(89) chloride versus palliative local field radiotherapy in patients with hormonal escaped prostate cancer: a phase III study of the European Organisation for Research and Treatment of Cancer, Genitourinary Group. *Eur Urol*. 2003;44(5):519-526. doi:10.1016/S0302-2838(03)00364-6
28. Nilsson S, Franzén L, Parker C, et al. Bone-targeted radium-223 in symptomatic, hormone-refractory prostate cancer: a randomised, multicentre, placebo-controlled phase II study. *Lancet Oncol*. 2007;8(7):587-594. doi:10.1016/S1470-2045(07)70147-X
29. James ND, Pirrie SJ, Pope AM, et al. Clinical outcomes and survival following treatment of metastatic castrate-refractory prostate cancer with docetaxel alone or with strontium-89, zoledronic acid, or both: the TRAPEZE randomized clinical trial. *JAMA Oncol*. 2016;2(4):493-499. doi:10.1001/jamaoncol.2015.5570
30. Gartrell BA, Coleman R, Efstathiou E, et al. Metastatic prostate cancer and the bone: significance and therapeutic options. *Eur Urol*. 2015;68(5):850-858. doi:10.1016/j.eururo.2015.06.039
31. Gartrell BA, Galsky MD. Clinical decision making in castration-resistant prostate cancer according to baseline prostate-specific antigen: are we measuring disease burden or disease biology? *Eur Urol*. 2015;67(2):231-232. doi:10.1016/j.eururo.2014.08.069
32. Smith M, Parker C, Saad F, et al. Addition of radium-223 to abiraterone acetate and prednisone or prednisolone in patients with castration-resistant prostate cancer and bone metastases (ERA 223): a randomised, double-blind, placebo-controlled, phase 3 trial. *Lancet Oncol*. 2019;20(3):408-419. doi:10.1016/S1470-2045(18)30860-X
33. Bruland ØS, Nilsson S, Fisher DR, Larsen RH. High-linear energy transfer irradiation targeted to skeletal metastases by the alpha-emitter 223Ra: adjuvant or alternative to conventional modalities? *Clin Cancer Res*. 2006;12(20, pt 2):6250s-6257s. doi:10.1158/1078-0432.CCR-06-0841
34. Langan D, Higgins JPT, Jackson D, et al. A comparison of heterogeneity variance estimators in simulated random-effects meta-analyses. *Res Synth Methods*. 2019;10(1):83-98.